



CORMANT-CS

Version 12.4.0

Release Notes

Doc Ref: Release Notes 12.4.0 (4)

Date: Friday, 31 January, 2025

Revision: Int. 001

© Cormant, a division of BGIS Global Integrated Solutions US LLC, 2003 - 2025

Table of Contents

1. INTRODUCTION	4
1.1 OVERVIEW	4
1.2 OPERATING SYSTEM, SQL AND BROWSER SUPPORT	4
1.2.1 <i>Support ending</i>	4
1.3 REFERENCE DOCUMENTS FOR CORMANT-CS VERSION 12.....	4
1.4 OFFLINE COMPATIBILITY WITH CORMANT-CS 12.4.0	5
1.5 LICENSING - UPGRADING FROM A VERSION PRIOR TO 11 (NEW KEY REQUIRED)	5
1.6 CORMANT-EDIS COMPATIBILITY	5
1.7 DEPRECATED API ENDPOINTS	5
1.7.1 <i>SOAP API</i>	5
1.7.2 <i>The deprecated endpoints with replacements are:</i>	6
1.8 RELEASE 12.4.0	7
1.9 RELEASE 12.3.2	7
1.10 RELEASE 12.3.1	7
1.11 RELEASE 12.3.0	7
1.12 RELEASE 12.2.1	8
1.13 RELEASE 12.2.0	8
1.14 RELEASE 12.1.0	8
1.15 RELEASE 12.0.1	8
1.16 RELEASE 12.0.0	9
2. INSTALLATION.....	10
2.1 UPGRADE FROM CORMANT-CS 7, 8, 9, 10, 11 TO VERSION 12	10
3. USER CONFIGURABLE DATABASE STORED PROCEDURES	11
3.1.1 <i>Asset Export Reports</i>	11
3.2 WORKFLOW.....	11
3.2.1 <i>Workflow's Export to Excel Feature:</i>	11
3.2.2 <i>Workflow Validation Procedures</i>	11
4. CHANGES IN 12.4.0.....	13
4.1 CORMANT-CS USES COMPRESSION OF ALL DATA PACKETS BETWEEN THE SERVER AND BROWSER CLIENTS.	13
4.2 WORKFLOW FEATURES.	13
4.2.1 <i>Able to install two components to the same Unit Location.</i>	13
4.2.2 <i>Workflow Manager Actions list.</i>	13
4.2.3 <i>Improvements to Workflow's Provisioning Dialog.</i>	13
4.2.4 <i>Ability to delete Workflow Tasks.</i>	13
4.3 USER MANAGEMENT.	13
5. CHANGES IN 12.3.2.....	14
5.1 OPTIONAL GLOBAL STORE CAN BE ADDED TO ALL SYNC PROFILES.	14
6. CHANGES IN 12.3.0.....	14
6.1 NEW ATTRIBUTE TYPES AND PROPERTIES HAVE BEEN ADDED.	14
6.2 USER MANAGEMENT IMPROVEMENTS.....	14
6.3 SEARCH RESULTS TAB IMPROVEMENTS.	15
6.4 WORKFLOW CHANGES.....	15
6.5 ALERTS MODULE.....	15
6.6 REPORTS MODULE.....	15
6.7 COMPONENT IMPORTS.....	15
6.8 TEMPLATES.	15
6.9 PLAN VIEW.	16
6.10 NEW LAYOUT FOR DB TOOLS.	16
6.11 CONFIGURATION TO ALLOW DIFFERENTIATION BETWEEN CORMANT-CS INSTANCES. .	16
6.12 EXPORT LOGS.	16
6.13 GENERAL IMPROVEMENTS.	16

6.14	OFFLINE CORMANT-CS APP.....	16
7.	CHANGES IN 12.2.0.....	17
7.1	ENHANCED IDENTIFICATION PROCESS.....	17
7.2	LDAP / ACTIVE DIRECTORY CONFIGURATION MOVED TO USER INTERFACE.....	17
7.3	DETAILED PROGRESS BARS.	18
7.4	NEW METER CHART TYPES ADDED TO DASHBOARD.	18
7.5	HISTORICAL REPORTS NOW IN FOLDERS.....	18
7.6	NEW WAY TO SELECT A RACK IN WORKFLOW.	19
7.7	THE SCRIPT LOGS PAGE CAN NOW EASILY ACCESS ALL RECORDS.....	20
7.8	WINDOWS OFFLINE APPLICATION.	20
8.	CHANGES IN 12.1.1.....	21
9.	CHANGES IN 12.1.0.....	21
9.1	2FA.	21
9.2	CONNECTIONS IMPORT FORMAT ENHANCED.....	21
9.3	SCRIPTING SERVICE IMPROVEMENTS.	21
9.4	SOAP API IMPROVEMENTS.	21
9.5	GENERAL BUG FIXES AND IMPROVEMENTS	22
10.	CHANGES IN 12.0.1	22
11.	CHANGES IN 12.0.0	22
11.1	KEY CHANGES IN 12.0.0.....	22
11.1.1	<i>New Feature called Albums</i>	<i>22</i>
11.1.2	<i>Storing Files in Albums will require MS SQL Filestream</i>	<i>23</i>
11.1.3	<i>Improvements to Channel Views</i>	<i>23</i>
11.1.4	<i>How you find things has been improved</i>	<i>24</i>
11.1.5	<i>Plan View Faster</i>	<i>25</i>
11.1.6	<i>Attributes and Templates have been re-organized.....</i>	<i>25</i>
11.1.7	<i>Other Improvements.....</i>	<i>26</i>
12.	LIST OF ENHANCEMENTS AND BUGS BY RELEASE	27
12.1	LIST OF ENHANCEMENTS IN 12.4.0	27
12.2	LIST OF BUGS FIXED IN 12.4.0.....	27
12.3	LIST OF ENHANCEMENTS IN 12.3.2	29
12.4	LIST OF BUGS FIXED IN 12.3.2.....	29
12.5	LIST OF BUGS FIXED IN 12.3.1.....	29
12.6	LIST OF ENHANCEMENTS IN 12.3.0	29
12.7	LIST OF BUGS IN 12.3.0.....	34
12.8	LIST OF BUGS IN 12.2.1.....	39
12.9	LIST OF ENHANCEMENTS IN 12.2.0	39
12.10	LIST OF BUGS RESOLVED IN 12.2.0	42
12.11	LIST OF ENHANCEMENTS IN 12.1.0	48
12.12	LIST OF BUGS RESOLVED IN 12.1.0	49
12.13	LIST OF BUGS RESOLVED IN 12.0.1	57
12.14	LIST OF ENHANCEMENTS IN 12.0.0	58
12.15	LIST OF BUGS RESOLVED IN 12.0.0	63

1. Introduction

1.1 Overview

This document is the Release Notes for Cormant-CS with version numbers starting with 12. It describes the changes from previous releases of Cormant-CS, new feature overviews and, if applicable, any information to upgrade.

Please see the root level folder in the software release package for prior version release notes. If you are upgrading from a version of Cormant-CS prior to 11.3, we strongly suggest you read the previous release notes as this document only refer to version 12 and assumes you are familiar with all changes up-to and including version 11.3.

This introduction is a summary of each release, see each major section for full details about each release.

Installation of the latest release will also supply all prior version changes.

1.2 Operating System, SQL and Browser Support

Cormant-CS supports all versions of Microsoft Server from 2016, onwards. Server 2012 support is not available.

Cormant-CS supports all versions of Microsoft SQL from 2016, onwards.

Browser support includes the latest versions of Edge, Chrome, Firefox, Safari on PC, Apple, Linux, Android & iOS mobile devices.

The Android offline application supports Android 9 and above.

The Windows offline application supports Windows 10 and above.

1.2.1 Support ending

During Q3/Q4 2022, Cormant dropped support for Microsoft SQL 2012 and 2014. SQL 2016 will be the oldest version supported.

During Q3/Q4 2022, Cormant dropped support for Windows Server 2012. Windows Server 2016 will be the oldest version supported.

In all cases, Cormant supports up to the latest versions released by Microsoft, including all patches and SP versions.

1.3 Reference Documents for Cormant-CS Version 12

As part of the release of software there is a **documentation** folder. This folder contains a number of key documents:

- **Cormant-CS Installation Guide.pdf** – provides full new and upgrade installation instructions.
- Multiple files: **Cormant-CS 12.X New Features Training.pdf** – provides a detailed review of Cormant-CS 12 new functionality for each release.
- **Cormant-CS-Offline-Sync-Service-Guide.pdf** – setting up synchronization to Offline Android.
- **Cormant-CS-Offline-Manual.pdf** – using the Cormant-CS Offline application.

We highly recommend these documents are reviewed prior to upgrade.

1.4 Offline Compatibility with Cormant-CS 12.4.0

If your organization uses the Offline application (Android and Windows), please note key changes include:

- Android and Windows Offline applications with versions prior to 12.3.0 **will not** work with Cormant-CS 12.4.0.
- The Android and Windows Offline Application with version 12.3.0 **will** work with this version of Cormant-CS - 12.4.0.

So, if you are using Android or Windows devices with the Cormant-CS Offline Application, all data needs to be synced to Cormant-CS and the Offline Application upgraded to 12.3.0 or later, at the same time the Cormant-CS server is upgraded.

As of version 12.3.0 the ports used internally (within the machine) by the Offline Application have changed. 8081 is now 54987 and 8082 is 54986. The Offline Application is made up of three parts a User Interface – Business Tier – Database, the UI and Business Tier uses the ports to communicate. There is no external access needed to these ports.

1.5 Licensing - Upgrading from a Version prior to 11 (New Key required)

An internal change in licensing for version 11 on requires a new license key to install Cormant-CS version 11+. Please email Cormant-Finance@bgis.com for a new key, if one has not already been provided to your key contact.

1.6 Cormant-EDIS Compatibility

This version of Cormant-CS is compatible with the following versions of Cormant-EDIS (this interface solution to systems such as ServiceNow, Jira, and others).

- 2.10.0

1.7 Deprecated API Endpoints

1.7.1 SOAP API

Some endpoints are now deprecated. This is because they return templates or attributes that will not be of the correct Component context, or the context is not clear by the name and may be misleading in the future. Another potential issue is attributes with the same name. When developers search for an attribute by name the first matching attribute irrespective of context will be returned. The new endpoints only return Component context attributes.

The GetAllAttributes endpoint has not been deprecated and will continue to return all attributes. A new property has been added to the returned data about an attribute (AttributeGroupContextType) that identifies the attribute's context, so that developers can sort and identify the attribute required.

Other Reasons for deprecating endpoints are Endpoints are being replaced to support new features. The old endpoints are not changed so as not to break existing code that may have been written.

The Reports Endpoints have not worked for a long time and we are not aware of any customers who use them.

1.7.2 The deprecated endpoints with replacements are:

Deprecated Endpoint	Date Deprecated	Replacement Endpoint	Endpoint removal
GetAllTemplates	September 22	GetComponentTemplates	Cormant-CS 13
GetAllTemplatesTemplate	September 22	GetComponentRootTemplate	Cormant-CS 13
GetTemplatesByLevel	September 22	GetComponentTemplatesByLevel	Cormant-CS 13
GetAttributeByName	January 23	GetCompontAttributeByName	Cormant-CS 13
GetAttributeSelections ByName	January 23	GetComponentAttributeSelections ByName	Cormant-CS 13
GetPredefinedAttributes	January 23	GetComponentPredefinedAttributes	Cormant-CS 13
GetSnmpPropertyValue ByComponentIDAndProp erty	May 2023	GetSnmpScalarTabularV alueByComponentIDAndProperty	Cormant-CS 13
GetSnmpPropertyValue ByComponentIDPropert yAndIndex	May 2023	GetSnmpTabularCellVal ueByComponentIDAndProperty	Cormant-CS 13
GetSnmpPropertyValue ByComponentPropertyA ndIndex	May 2023	GetSnmpTabularCellVal ueByComponentAndProperty	Cormant-CS 13
GetUserReport	June 2023		Cormant-CS 13
GetUserReportsByUser	June 2023		Cormant-CS 13
GetHistoricalUserRep ortByUser	June 2023		Cormant-CS 13
GetCustomUserReportB yUser	June 2023		Cormant-CS 13
DeleteUserReport	June 2023		Cormant-CS 13
SaveUserReport	June 2023		Cormant-CS 13
SaveComponent	July 2023	SaveComponentAttributes or TryUpdateComponentAtt ributeValue	
GetReportFolderByNam e	Mar 2024	GetCustomReportFolder ByName	Cormant-CS 13
GetReportFolderByID	Mar 2024	GetCustomReportFolder ByID	Cormant-CS 13
GetAllReportsByReport	Mar 2024	GetAllCustomReportsBy	Cormant-CS 13
GetReportAttributes	Mar 2024	GetCustomReportAttrib utes	Cormant-CS 13
GetAllReportFolders	Mar 2024	GetAllCustomReportFol ders	Cormant-CS 13

1.8 Release 12.4.0

This is a small feature improvement release which also addresses some reported and unreported bugs.

The Application now uses global compression of data packets between the server and the client web browser. This speeds up the user experience of the application especially on slower networks and where large amounts of data are being transported.

There are some improvements to Workflow, see below for details.

There has been a complete check on how users who log into Cormant-CS via LDAP works (Not IIS Windows Authentication). Features like "Auto Create" new user and Guest User are now working as expected.

1.9 Release 12.3.2

This Release adds the ability to Select a global store that gets added to all Sync Profiles and a single bug.

Admins can now configure a Global Store where new equipment and cables can be added. This store will then be added to all Sync Profiles and allow users to scan the barcodes of the new equipment or cables.

An issue with "Playing Forward" connections that use existing barcoded cables was discovered while testing for the Global Store feature. When "playing forward" new connections, this bug, creates a new cable with the same name but no Barcode as the original. This bug affects all prior versions of the offline application.

1.10 Release 12.3.1

This is a single bug Release.

A Plan View refresh issue was corrected.

1.11 Release 12.3.0

This is a feature improvement release which also addresses a large number of reported and unreported bugs.

Customers with several instances of Cormant-CS for Production and UAT Purposes are now able to add text and change the top banner color to easily differentiate between these instances. The configuration remains between re-installation of the application and database upgrade from another system. So perfect for UAT / Test instances which are periodically updated with a copy of the production systems database.

Password length (max 32 char) can now be specified independently from password strength.

Additional logs have been add to track who and what data has been exported from the system, and changes to Plan Views.

Additional Role Permissions are available along with the ability to report on the permissions set.

A new library (IronPDF) is now being used to produce PDF's. This has been prompted by potential security and license issues with the old one. This means that customers may notice that the Release Package is larger than before. The application also takes up more space on disk.

Audit module has been added to Offline Cormant-CS App. Both Equipment Audits and Connection Audits can be done. The items audited and other changes made as part of the Audit process can be synced to the main database.

Important

As part of this work the Offline Sync Service has had an update that prevents it working with Offline Applications prior to 12.3.0. This means that all Offline Devices will need to be synchronized with Cormant-CS prior to Upgrade of the Server. See 1.4 above

1.12 Release 12.2.1

Bug fix release with one fix for using HTTPS to connect to the Entra ID server.

1.13 Release 12.2.0

The IIS's "csweb" Application Pool now uses the "Integrated" model rather than "Classic". This is to support features such as SignalR that communicates process progress information. This change should happen automatically as part of the re-installation of Cormant-CS Web.

This release enables customers who use Entra ID (Azure AD) to use that Authenticator Application to use Cormant-CS. The Authenticator (Cormant-CS, LDAP/AD, Entra ID) that a particular user is to use can be configured on a user by user basis.

Configuration of LDAP/AD and Entra ID now part of Application and stored in the Database. This data is no longer to be entered into the web.config file as part of the application installation process.

There are UI improvements allowing users to see a more accurate process progress for actions such as Import and Delete of components.

The Date Pickers that a user will use to set Dates and Date Times will be that provided by the Browser being used.

Historical Reports can now be placed in Folders. Copying, Moving, and Deleting of both Custom and Historical Reports can be done by drag and drop, Cut/Copy/Paste and Keyboard shortcuts.

A Windows version of the Offline App has been created and is available in the release folder alongside the Android version.

See the Below for full details.

1.14 Release 12.1.0

This version enables customers who use Cormant-CS login accounts to access Cormant-CS to configure and use Email base Two Factor Authentication (2FA)

A lot of minor but annoying UI bugs have been sorted out. Along with further speed improvements.

See the Below for full details

1.15 Release 12.0.1

This version contains a fix for a bug that prevents the Database Wizard from upgrading customer databases that were first created prior to Version 8.0.

Important

As part of this work the Android Offline Sync Service has had an update that prevents it working with Android Offline Applications prior to 12.0.1. This means that all Android Devices will need to be synchronized with Cormant-CS prior to Upgrade of the Server. See 1.4 above.

1.16 Release 12.0.0

Initial release, see reference documents.

2. Installation

The **Cormant-CS Installation Guide** in the Documentation folder of the release contains details about installation process.

2.1 Upgrade from Cormant-CS 7, 8, 9, 10, 11 to version 12

There are no differences to the distribution requirements for Cormant-CS version 12 vis-a-viz Cormant-CS 7, 8, 9, 10, 11. The upgrade will be similar to any normal upgrade:

- Sync all Handheld Devices (if using).
- Backup the existing Cormant-CS database.
- Uninstall Cormant-CS Client (pre-10), Server and Web.
- Use the Setup_x64.exe in the Server folder (Full Installers) of the release. An MSI installer is provided for use by customer performing an in-major-version-upgrade, but the exe should be used for first upgrade to 12.x.
- Run the Database Wizard, it should start automatically. This ensures that the configuration points to the correct database instance and will update the schema and create new stored procedures.
- Install the Cormant-CS web using the .exe file. The same rules regarding MSI installers apply.

3. User Configurable Database Stored Procedures

The Cormant-CS database has a number of Stored Procedures that are designed to be configured to suit particular customer requirements. These Stored Procedures are not automatically updated as part of the database upgrade process and, if required, updates need to be done by customers.

There are three types of Stored Procedure that falls into this category:

3.1.1 Asset Export Reports

These are the exports that users can output via the Asset Tree's Context Menu's Exports options:

- Affected Devices
- Free Cables Export
- Power Affected Devices
- History Export - **this no longer works** and can be removed. It has been replaced by the History tab which provides better functionality. Contact Support for how to remove this export!
- Rack Connections Report

Note: Your site may not have or have additional export reports to the ones listed above.

There are currently no recommended updates to any of these stored procedures.

3.2 Workflow

If customers are not using the Workflow module then there is no need to update either the Export to Excel or the Workflow Validation Stored Procedures.

If you or your users are looking to experiment with Workflow we **highly recommend** reading the "Simple Workflow Setup Read Me" document in the release folder under ".\Implementation Tools and Examples\Simple Workflow setup". Here you will find details of how to set up workflow to try it out in your environment. This directory also holds an example "Update Task Validator" stored procedure which is a good starting point for most customers.

3.2.1 Workflow's Export to Excel Feature:

- Affected Devices
- Patch Schedule Report
- Power Affected Devices
- Rack Selector Scores
- Task Summary Report

Note: Your site may not have or have additional export reports to the ones listed above.

3.2.2 Workflow Validation Procedures

- Create Order Validator
- Update Order Validator
- Create Task Validator

- Update Task Validator

See the current Version release details for specific information regarding any changes made to any of these Stored procedures and any special upgrade information.

4. Changes in 12.4.0

The main focus of this release

4.1 Cormant-CS uses compression of all data packets between the Server and Browser Clients.

The use of compression should speed up the transmission of data between the Server and browser clients. This will be particularly noticeable where there are very busy / slow networks. Users should experience less waiting for the screen to populate for high load screens like History and Floor Plans.

4.2 Workflow Features.

4.2.1 Able to install two components to the same Unit Location.

The **Equipment Width** and **Horizontal Offset** fields have been added to the Workflow > Device Details tab of Install and Move tasks, so that components sharing the same unit location can be planned.

4.2.2 Workflow Manager Actions list.

A "Disconnect Network Cables" link has been added to the Actions list, similar to "Disconnect Power Patches"

4.2.3 Improvements to Workflow's Provisioning Dialog.

The Provisioning dialog now has an area where Network data relating to Ports can be seen and edited. This is similar to the Network data for devices.

Ability to modify the Device Port Name during connect process in WF provisioning.

The full channel depatching is now created in WF Provisioning's Patch Schedule list, not just the first hop from the device port, in WF Move and Decommission Tasks.

When creating Connections in the WF Provisioning's Patch Schedule, a restriction warning that the ports' Application or Category do not match can be created.

4.2.4 Ability to delete Workflow Tasks.

A new feature for CS Administrators to Delete Workflow Tasks has been added to the Admin>System Settings>Workflow tab.

4.3 User Management.

Now the User Activation dialog is skipped when creating users for LDAP Identity Provider.

Guest User account now works with Cormant-CS Login Screen.

Automatic creation of Cormant-CS Login LDAP Users now works.

Guest User account With IIS Windows Authentication no longer requires Anonymous authentication..

5. Changes in 12.3.2

5.1 Optional Global Store can be added to All Sync Profiles.

Admins can now configure a Global Store space where new equipment and cables can be added. This store will then be added to all Sync Profiles and allow users to scan the barcodes of the new equipment or cables.

In the Android Offline Sync Service's Settings.config file a new configuration setting has been added "Global_Store_Component-ID" if a valid component ID for a Space (preferably of type Store Room) is entered, This space will be added to every sync Profile. All components in this global Store will then be "visible" and when scanned will be found and used for installation and connection activities.

6. Changes in 12.3.0

This version has changes to: How users are identified when logging on. Progress notification of potentially long running tasks has been improved. New Chart types have been added to the dashboard, and a new Offline App for Windows mobile devices has been released.

6.1 New Attribute Types and Properties have been added.

Unique – A property that checks existing values when updating the attribute and flags an error if a duplicate would be created. This property is only available for Alpha and Alphanumeric attribute types. When copying components the attributes marked as unique will be cleared. On the Search Results grid the Column Header edit capabilities that allow all rows to be set to the same value are disabled.

The following Attribute Types have been added:

IP Address – Restricts values to valid IP Addresses. Both IP4 and IP6 are allowed.

MAC Address – Restricts values to valid MAC Address formats.

DateTime – allows a time portion to be stored along with the date.

6.2 User Management Improvements.

The Users tab has been made the initial landing page when entering the module.

The Zones tab's All Spaces area has been simplified to make it clearer.

The arrangement of the Permissions tab has been improved and expanded. Permissions can be set for Historical and Scheduled report folders. The Alerts module access can now be set / restricted. A Section has been added to control a Role's ability to Export data from various parts of the system.

When creating a new Role, the user can clone attribute and report folder permissions from another Role and the Zone permissions from a different Role.

There is a new tab: Permission Reports which allows the Administrator to see and report/export the permissions for different parts of the permissions system.

The length of passwords used for Cormant-CS controlled logins can now be set independently of the password strength.

6.3 Search Results tab improvements.

The user can select filtered items in the Search Results tab and using the new Actions button's Link to Album option can select and assign an Album to those rows.

The user can select filtered items in the Search Results tab and using the new Actions button's Create Tasks option can create Workflow tasks for those rows.

6.4 Workflow changes

Users no longer need to specify the new name of a component when creating a Rename task. When installing an existing component that will require a name change, the component is not immediately renamed as previously. Instead, the user can decide when the component is renamed using the Rename button.

Users can create a new Order from the Create Task dialog if it is found that the one desired has not been created yet.

The Create Task dialog's "Customer Questions" section now supports Mandatory Attributes and will cause validation when saving the task if these are not filled out.

6.5 Alerts Module.

The Alerts Modules: Enable Alerts and Thresholds tabs have been moved to the Admin > Configuration section.

6.6 Reports Module.

The way Scheduled reports are defined has been changed. The settings that affect when and where the reports are going to is defined in a new tab: Details. A new tab Asset Reports is where the user can define what the report is, that they wish to schedule.

More than one email address can be assigned to be the recipient of a Scheduled report.

Scheduled Reports can be arranged in folders.

All report types can now be Copied, Cut and Pasted from one folder to another folder in the same report section. Users can also use keyboard short cuts and Drag and Drop.

6.7 Component Imports.

Component Imports now support the use of Component ID. This is the unique internal identifier for the component. When specified the only other details that need to be added is the data that is to change. So, no need to specify Name or Space.

The Component ID can be found by placing the mouse cursor over the Name and Space fields in the Assets > Details tab and viewing the tool tip.

The Component ID is now part of Component Export and can be added to Reports

6.8 Templates.

Template settings for Scripts and Thresholds can be cloned to other Templates.

On Admin>Templates>Attributes tab attributes now show their Units.

6.9 Plan View.

Speed of Plan View has been improved, with the addition of caching and only sending / receiving the changes to the plan.

The export of an image (PNG, JPEG, BMP) of a Plan View can be done via the new Export button.

Changes to spaces and components on plans are now logged to Component History as source Plan View

6.10 New Layout for DB Tools.

The DB Tools tab has a new layout making it easier and more intuitive as to what is happening.

6.11 Configuration to allow differentiation between Cormant-CS Instances.

Many Customers have Several instances of Cormant-CS for Production and UAT Purposes. Customers are now able to add text and change the top banner color to easily differentiate between these instances. The configuration remains between re-installation of the application and database upgrade from another system. So perfect for UAT / Test instances which are periodically updated with a copy of the production systems database.

6.12 Export logs.

When exporting data from the system, logs are created to track who and what was being exported. These logs can be viewed in Admin > Logs > Export Log, with the usual filtering options.

6.13 General Improvements.

The speed at which Rack Views display has been improved.

The way reports are processed and the amount of memory they consume has been improved.

On the Saved Attributes page the user can now see when the attributes were last saved.

6.14 Offline Cormant-CS App.

Audit has been added to Offline Cormant-CS App. Both Equipment Audits and Connection Audits can be done. The items audited and other changes made as part of the Audit process can be synced to the main database.

The Administrator can now select what Spaces are included as part of a Sync Profile.

The Offline app now allows Users to download more than one Sync Profile onto an offline device for use later. The user selects which profile, from the ones downloaded, that they wish to work on when signing in to the application.

Important

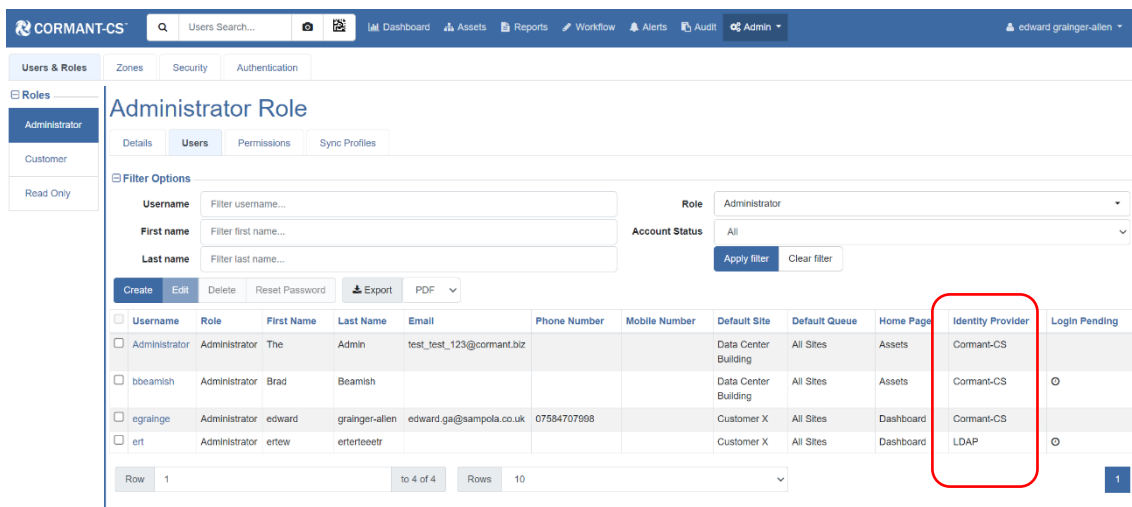
As part of this work the Offline Sync Service has had an update that prevents it working with Offline Applications prior to 12.3.0. This means that all Offline Devices will need to be synchronized with Cormant-CS prior to Upgrade of the Server. See 1.4 above

7. Changes in 12.2.0

This version has changes to: How users are identified when logging on. Progress notification of potentially long running tasks has been improved. New Chart types have been added to the dashboard, and a new Offline App for Windows mobile devices has been released.

7.1 Enhanced Identification Process.

Users can now be configured to use Cormant-CS, LDAP / Windows Active Directory (AD) or Entra ID (formerly Azure AD) as the identity provider to confirm login details. This means that different users can be set to use their Active Directory account name and password to login while other users their Cormant-CS and Cormant Password. Entra ID has been added to the list of allowed Identity Providers. Customers with WWW exposed instances of the software have requested this to provide a more secure web friendly logging in process for their web users. Entra ID supports MFA and Single Sign-On capabilities.



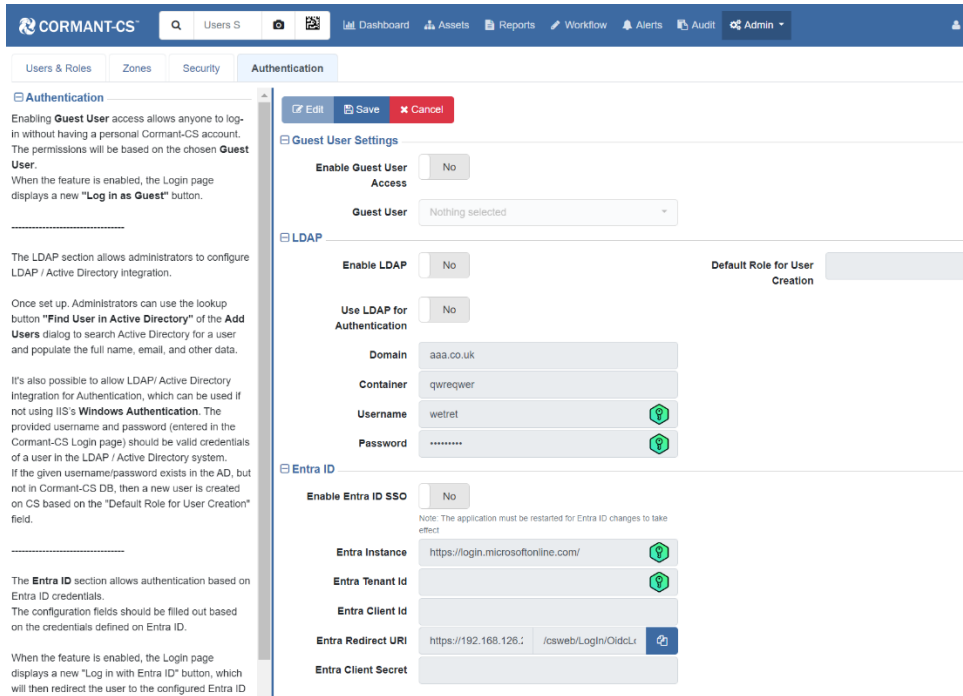
Note: If you use IIS’s Windows Authentication you will not be able to take advantage of these improvements and IIS handles the Identification process.

7.2 LDAP / Active Directory Configuration Moved to User Interface.

LDAP / Active Directory configuration is no longer done in the web.config file. A new Tab has been added Admin > User Management > Authentication. Here all the settings can be entered and these will now be persisted between upgrades.

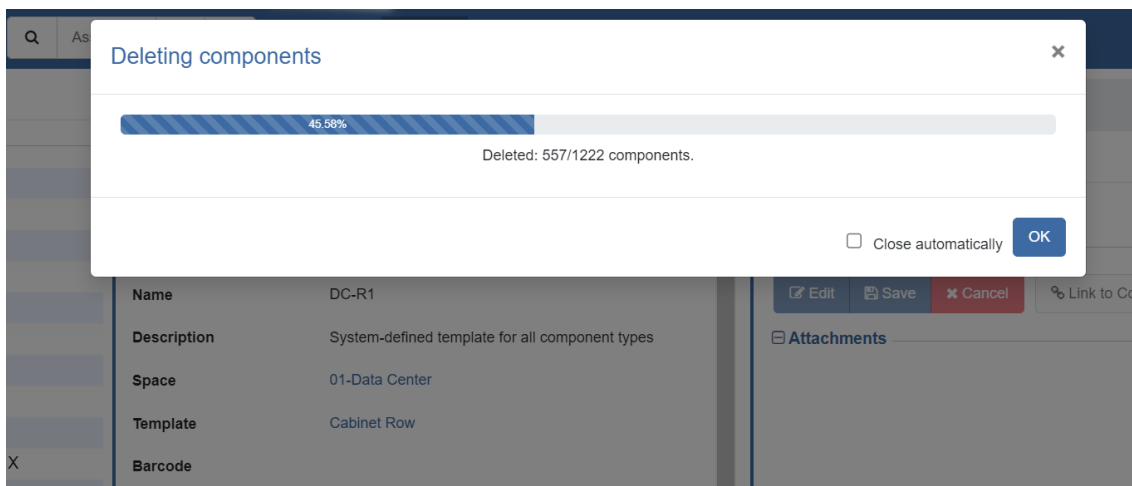
Also on the new Authentication tab are the settings for Entra ID configuration.

See the New Installation Guide for detailed instructions for setting up LDAP/AD and Entra ID.



7.3 Detailed Progress Bars.

User will now see detailed progress bars for actions like Deleting and Importing Components. These show the number of items processed against the total in both numerical and visual way.



7.4 New Meter chart types added to Dashboard.

The choice of chart types for display of Custom Report data has been expanded to include meter chart types of Cylinder, Thermometer and Vertical LED charts. Configuration is the same as for the existing Meter type chart.

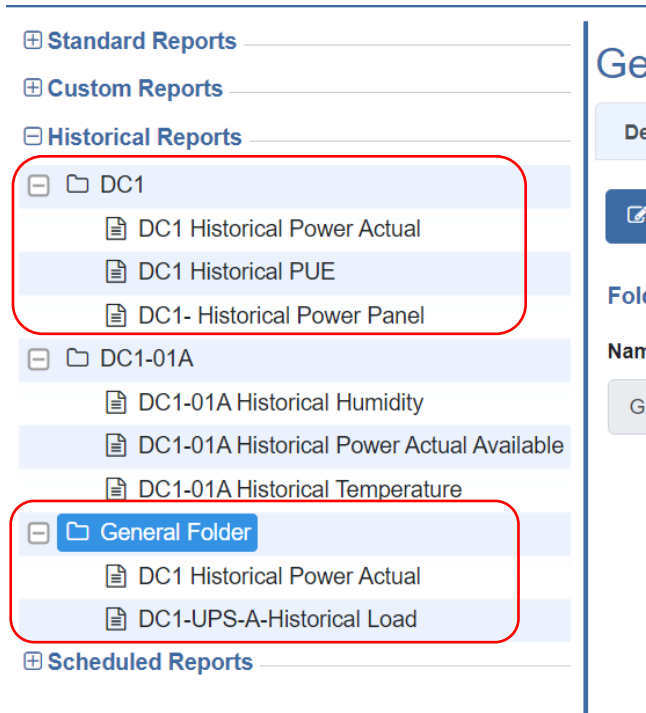
7.5 Historical Reports Now in Folders.

We have added the ability to add folders to store your Historical Reports in. This will allow you to group reports and make them easier to find.

You will now see your Historical Reports in a folder called **General Folder**. You can create additional folders and rename the **General Folder** as required. Historical

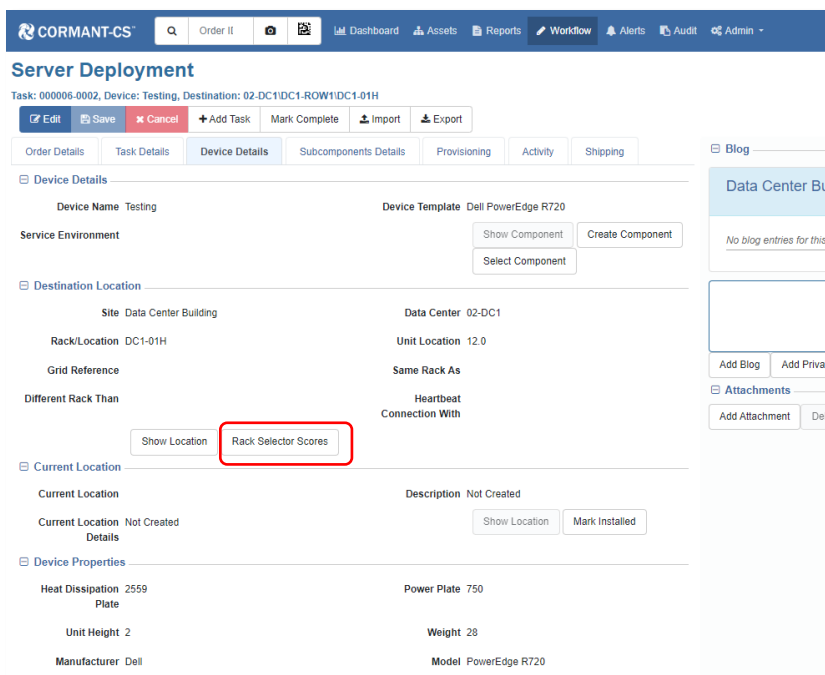
Reports can be Dragged and Dropped, Cut/Copy/Pasted to move or copy them. You can also use keyboard short cuts keyboard short cuts. Historical Reports cannot be moved to Custom Report folders and vice versa.

The name of a report must be unique to a Folder, but other folders can contain reports of the same name.



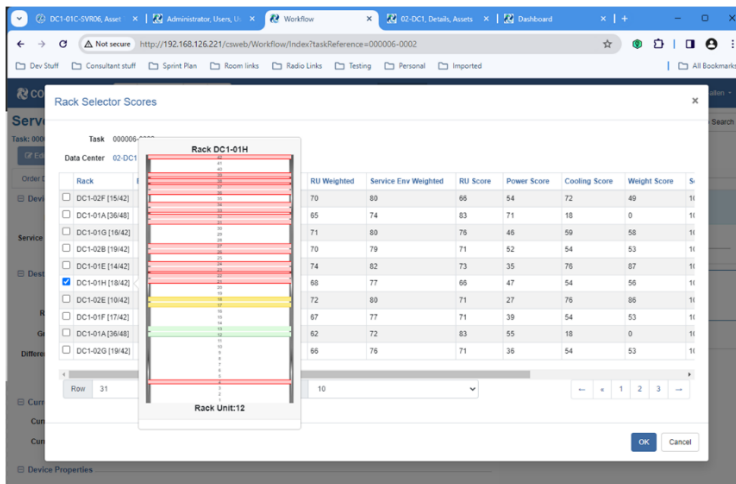
7.6 New Way to Select a Rack in Workflow.

The **Rack Selector Scores** export has been a popular and useful tool in workflow for a while. We have now made it part of the UI and it can be access via a button – **Rack Selector Scores**.



A new **Rack Selector Scores** dialog will appear with the racks ordered in the datacenter by their capacity scores. Racks with more available Space, Power, Cooling are at the top, less suitable racks are at the bottom

The columns can be Sorted by clicking the headers.



If the task is in **Edit Mode**, a rack can be selected to use for the task by setting the check box.

Hovering over a rack will show the **Unit Location Selector** and the location you want the device be place can be selected and set for the task as well, saving time.

Click OK to save and return to Workflow

7.7 The Script Logs Page Can Now Easily Access All Records

The Admin > Logs > Script Logs tab has been altered so that it is more responsive and will work easily with all the log data that is available.

A Toggle button **Updates Auto** (default on) causes new logs as they are created to be sent to Grid. The Script logs in the DB can be Filtered using the Filter Section. The filtered view will be updated with new logs that fit the filter if the toggle is set to **Updates Auto**.

The Grid columns can be Sorted – toggle changes to **Updates Off** and if the user changes toggle to **Updates Auto** the grid will revert to sort by **Log Time**.

It is easy to search older logs by changing pages, but again the toggle will change to **Updates Off** and if the user changes toggle to **Updates Auto** the grid will revert to the first page.

7.8 Windows Offline Application.

A new Windows Offline Application has been created. It looks, works and is configured the same as the Android Version.

Installation is the same as other windows applications – installer is in the Offline Application section of the Release package.

For further details see the Offline Application User Guide and Configuration Guide in the Documentation section of the Release package.

8. Changes in 12.1.1

Bug release to fix issue of Object Ref errors in IIS Windows Authentication environments.

9. Changes in 12.1.0

This version enables customers who use Cormant-CS login accounts to access Cormant-CS, to configure and use Email base Two Factor Authentication (2FA)

9.1 2FA.

User who log into Cormant-CS and who are authenticated via their Cormant-CS Password can be configured to use 2FA via emailed pass code.

When Users log in to Cormant-CS a 6 digit code will be sent to their registered email accounts and this code must be entered into an Authentication Confirmation dialog before the user is granted access to the application. Users have the option to remember the authentication on the device / browser.

See 12.1.0 New Features Training.PDF for more information.

9.2 Connections Import Format enhanced.

Connections Import file format has been enhanced to more accurately document user's intentions and also make creating connections import files easier. These changes mean that dangling cables can be imported.

See 12.1.0 New Features Training.PDF for more information.

9.3 Scripting Service Improvements.

The Scripting Service that runs scripts has be improved to provide better through put. This particularly affects SNMP scripts that collect data from devices. To fully take advantage of these improvements, customers are advised to make minor changes to their scripts to improve multi-tasking. If customers suspect that they are using scripts that collect data via SNMP they should contact Cormant Support for help and advice on suggested changes for scripts that use SNMP to collect data.

9.4 SOAP API Improvements.

The Soap API has been reviewed.

A lot of endpoints that had developed issues have been fixed.

Some Endpoints are not going to be supported and have been deprecated and will be removed in Cormant-CS 13.0.0

There were some endpoints that were documented as being for use with cswebapi code, was actually designed for use in Cormant-CS Scripts only. The documentation of these endpoints has been corrected.

We have tried to maintain the format of current endpoints. There are some new Features and corrections to old features where we have taken the view that rather than change existing endpoints and so break existing code using those endpoints. New endpoints have been created and the old ones marked as deprecated. This will allow customers time to review and plan changes to their code that uses Cormant-CS SOAP API.

For full details of all of these changes see the SOAP API Programming Guide.

9.5 General Bug fixes and Improvements

A lot of minor but annoying UI bugs have been sorted out. Along with further speed improvements.

See the

10.Changes in 12.0.1

This version resolves an issue with upgrading Cormant-CS databases which were first created prior to Cormant-CS 8.0. The Android Offline Application will need to be upgraded as part of the upgrade process. See 1.5 above for more details.

11.Changes in 12.0.0

This version resolves a number of issues with Android offline synchronization that had the potential to leave some data unsynchronized. While this was unlikely, customers were advised of these issues once discovered by BGIS Cormant. To ensure they will not occur in a live or test environment please ensure Android offline software is upgraded to 11.3.4, as well as Cormant-CS core. Google Play store is already updated to this version, so it is possible devices may receive this version automatically depending on each enterprises policy.

11.1 Key changes in 12.0.0

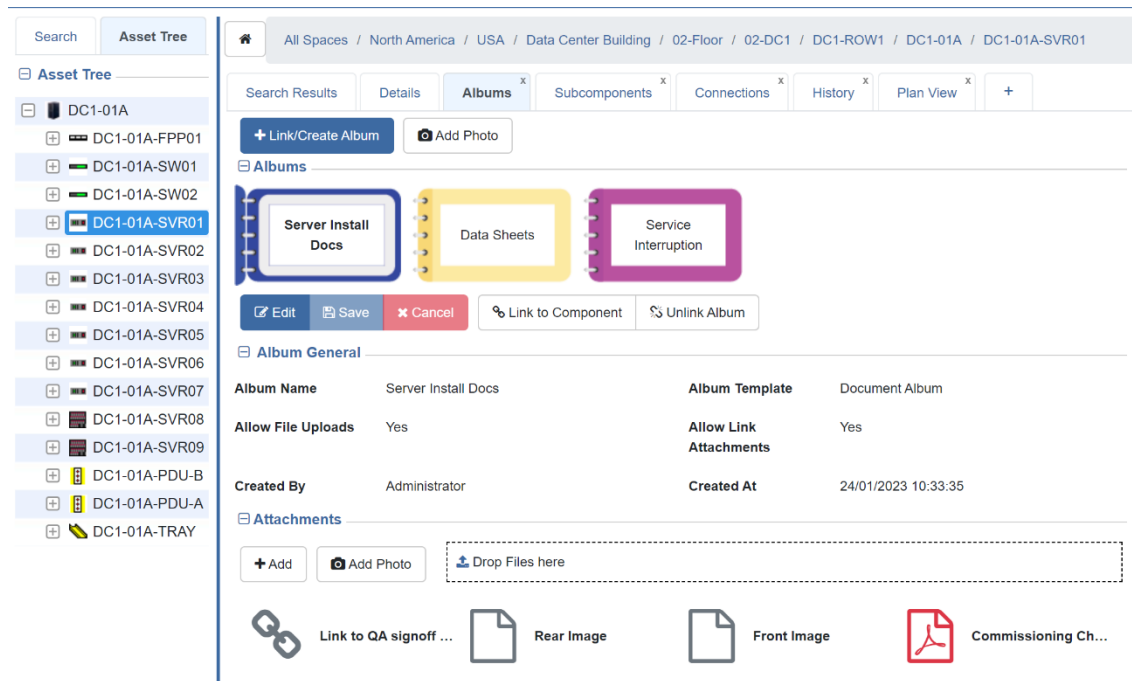
11.1.1 New Feature called Albums

Albums allow you to group some files and, or Links to websites and shared files, together and link them to a number of Components (Assets). You can have as many albums as you want and these can contain as many files as you need and linked to as many components as necessary. Additional information (attributes) can be stored alongside the files and links in an Album.

An Albums can be created to store the Service Contract documents and details for your servers. This album can be linked to all your servers covered by the contract and if there is an issue with one of those servers, you can access the Service Contract and contact details from that server.

Fault procedure documents can also be added to an album and linked to the devices covered by the procedure. When there is an issue, the engineer dealing with the issue just needs to open the appropriate Album linked to the type of fault and follow the instructions without having to wade through a list of similar documents and decide which one is appropriate for the device currently being dealt with.

A new tab, Albums, has been added to the Assets module.



For more details on this new feature see the New Features Training document for 12.0

11.1.2 Storing Files in Albums will require MS SQL Filestream

The new Albums feature is able to store URL/URI Links to websites, documents stored on the web and documents stored in shared locations. This **does not** require MS SQL Filestream to be enabled.

Albums are also able to store files in the SQL database, if MS SQL Filestream is enabled and set up. The files are actually stored in a directory on the server that only MS SQL should access to. Customers need to consider: the space needed to store the files on the server, the DB backup settings and the size of DB backups.

Because considering these issues requires careful thought and discussions between different teams, CS server admin team, Data Storage team, DB Admin team, Cormant have designed Albums and the upgrade process to **not** require Filestream to be enabled from the beginning. Instead, customers can upgrade Cormant-CS as normal and investigate and use Albums without storing files in the system. Later when Filestream has been researched and resources, processes and procedures have been agreed and Filestream implemented. Cormant-CS can be enabled to make use of Filestream and the ability to store files implemented.

For more information see the Install Guide

11.1.3 Improvements to Channel Views

The Connection tabs Channel View is now able to show more information. Users can chose attributes (up to seven) to add to the view. These attributes are shown as columns of data on the right of the screen. Data is shown in these columns for components with those attributes. This will allow users to gain greater insights about the Channel and the elements that make it up.

A new view has been added to the list. The Channel Details View shows the Channels in small discreet tables showing the Rack, Chassis, Module, Port and the Sheath, Cable relationships as well as information such as Application / Category of the ports and cables along with length and total length of the channel. This view

can also be edited similar to the Channel View using the Right click context menu. Users can also export this view to PDF, XLS and CSV file formats.

The screenshot shows a software interface with a 'Connections' tab selected. A table displays connection details for three channels. A right-click context menu is open over the first row of the first channel, showing options: 'Channel View', 'Patch View', 'MPO View', and 'Channel Details View'. The table columns are: Space, Device Name, Barcode, Device Template, Port / Cable, Template, App / Cat, and Length.

Space	Device Name	Barcode	Device Template	Port / Cable	Template	App / Cat	Length
Channel 1 - DC1-01A-SVR03 to DC1-01A-SW01							
DC1-01A	DC1-01A-SVR03	52776051	Dell PowerEdge R720	DC1-01A-SVR03-C1	10/100/1000Mb	1000 Base TX	0
DC1-01A				44000018	Cat 6 Patch Cable Green	Cat6	2
DC1-01A	DC1-01A-SW01	52776055	Avaya VSP 4850GTS	DC1-01A-SW01-C03	10/100/1000 BaseTX	1000 Base TX	0
Total Length							2
Channel 2 - DC1-01A-SVR03 to DC1-01A-SW02							
DC1-01A	DC1-01A-SVR03	52776051	Dell PowerEdge R720	DC1-01A-SVR03-C2	10/100/1000Mb	1000 Base TX	0
DC1-01A				44000019	Cat 6 Patch Cable Green	Cat6	2
DC1-01A	DC1-01A-SW02	52776054	Avaya VSP 4850GTS	DC1-01A-SW02-C03	10/100/1000 BaseTX	1000 Base TX	0
Total Length							2
Channel 3 - DC1-01A-SVR03 to DC1-01A-SW01							
DC1-01A	DC1-01A-SVR03	52776051	Dell PowerEdge R720	DC1-01A-SVR03-C3	10/100/1000Mb	1000 Base TX	0
DC1-01A				44000020	Cat 6 Patch Cable Green	Cat6	2
DC1-01A	DC1-01A-SW01	52776055	Avaya VSP 4850GTS	DC1-01A-SW01-C06	10/100/1000 BaseTX	1000 Base TX	0
Total Length							2

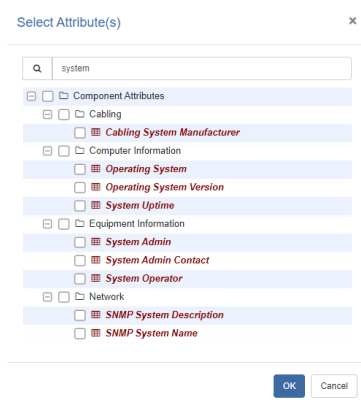
See New Features Training for more details.

11.1.4 How you find things has been improved

We have reviewed how users look for things throughout the application. From this review we have identified features and methods that work well and combined them to create an easier, quicker, and friendlier way to find things.

Quick Search now operates in more places. To make it clear what is being searched a background text has been added, and where appropriate if wild cards are supported. Wildcards are used where the need for a single exact match is required (Assets module) and remains % and * characters and match 0 or more characters. If an exact match is not needed, then leading and trailing wild cards are implied by the search automatically so the user just needs to use a partial bit of text which can be in the middle of items being searched. Either way the Tree is filtered to the resulting search results showing all matches.

Selector Dialogs used to choose an item from a tree list, also use partial text search (no need for wild cards) and filter the tree when search text is entered. Where large trees are being filtered such as in the Space and Template Selector Dialogs "lazy loading" is employed. Not all the elements are obtained from the server and displayed in one go. The first filtered branch of the tree is shown expanded. Other parent branches containing filtered items are also shown, but "Closed". As the user expands these branches further filtered nodes are fetched from the server. This makes for a faster, more responsive user experience.



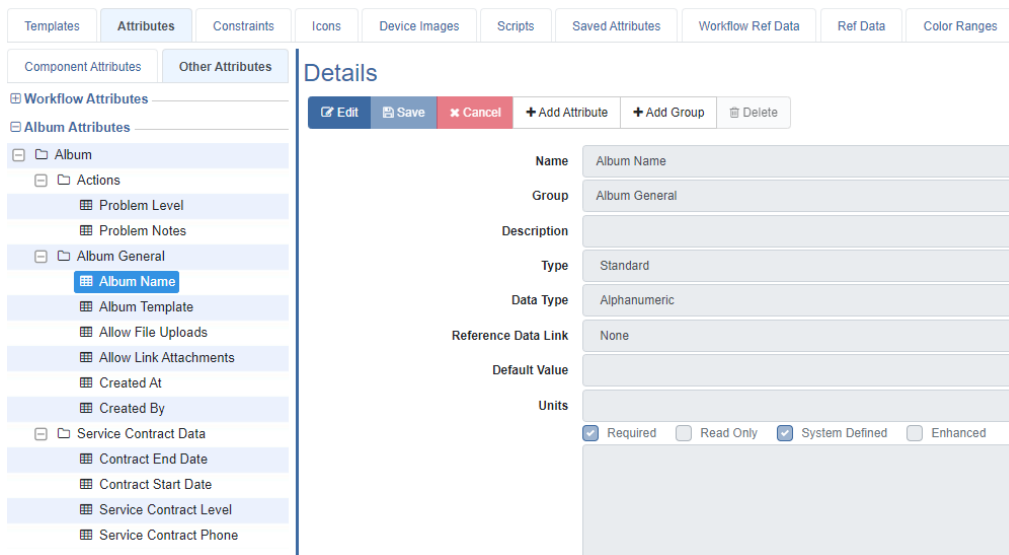
11.1.5 Plan View Faster

On top of the improvements in speed achieved in 11.X, Users should see improvements when interacting and editing plan views. When moving away from a plan view tab and back again, the view will appear quicker as the plan view data is now cached.

On nested plan views, such as where a Floor has a nested Data Center plan embedded in it, device images will not show on racks in the nested plan view when in 3D mode. Clicking on an object within the nested plan view will focus the view to just be the nested View and then the Device Images will be shown.

11.1.6 Attributes and Templates have been re-organized

As part of implementing Albums, we have separated attributes and templates into different contexts. These are: Components, Workflow, and Albums. Attributes and Templates cannot be moved between contexts. The UI has been modified to make this separation clear.



Attributes cannot use the same name as an existing attribute in the same context, but attribute names in different contexts can be the same.

See New Features Training for more details.

11.1.7 Other Improvements

The speed of Importing a large number of components in one file has been improved.

The speed of deleting a large number of components has been improved.

We have had a "Blitz" on Console errors in the application. These are errors that appear in the browser, and while they often do not stop or prevent what the user is doing, they do cause "Waits" while the browser decides what to do and slow the application down. This combined with other speed improvements should mean that users find this version noticeably faster and easier to use.

12. List of Enhancements and Bugs by Release

12.1 List of Enhancements in 12.4.0

Item Key	Summary	Cormant Component	Customer Case Number
CS-11363	Add System Settings switch to turn off using DTC	Album Configuration and settings	31891
CS-11389	Skip User Activation dialog when creating users for LDAP Identity Provider	Security / Login	
CS-11226	Guest user account requires Anonymous IIS Authentication	User Management / Users and Roles	32432
CS-11407	Allow 2 components to be installed in the same Unit Location	Workflow / Device Details	31124
CS-10120	Add Equipment Width and Horizontal Offset fields in the Device Details tab of install/move tasks so that two components in the same unit location can be mounted	Workflow / Device Details	31124
CS-10935	To have a field within the New Patch Schedule dialog box to add Network Port data.	Workflow / Provisioning	31975
CS-11161	Add the Destination device patching in the WF Provisioning list not just the active device source port in the WF Task	Workflow / Provisioning	32179
CS-11125	Ability of WF provisioning to modify the destination port name during connect	Workflow / Provisioning	32180
CS-10927	To have a validation or restriction warning that the ports type do not match in Patch Schedule Provisioning	Workflow / Provisioning	31976
CS-11102	Add a new feature for CS Administrators to perform Delete WF Task	Workflow Admin	32208
CS-10913	Add a "Disconnect Network Cables" link (from Workflow tab Actions tab) similar to "Disconnect Power Patches"	Workflow Manager	31977

12.2 List of Bugs Fixed in 12.4.0

Item Key	Summary	Cormant Component	Customer Case Number
CS-11162	[Refresh] Updating Threshold values is not reflecting on the table, needs browser refresh	Alerts / Thresholds	
CS-11339	Toggling the blank option in the asset details will also hide the selection attributes, even if a value is present.	Assets / Components	32564

CS-11410	Canceling component creation after encountering Required Attribute restriction is not working	Assets / Components	
CS-11355	Console error when making Connections and in other places	Assets / Connections	
CS-11180	[Intermittent] Adding a new component after using the 'Save Template' function results to a console error and loading state of PV	Assets / Plan-view	
CS-11153	Racked equipment of nested plans do not disappear when disabling the Show Rack Equipment of Nested Plans option	Assets / Plan-view	
CS-11200	Import File with custom attribute creates duplicate attribute	Attributes	32398
CS-11177	Import in Component Services of Workflow Ref Data does not recognize "Switch Name", should be Component Name or Switch only	Configuration	
CS-11197	When the Windows Offline App remains idle in edit mode for a few minutes, it triggers an unauthorized error when attempting to save	Offline	32347
CS-11196	Connection: Error encountered when connecting a cable less than 1 meter	Offline / Connections	32383
CS-11218	Cut/paste and modify multiple components from one rack to another does not sync changes	Offline Sync Service / Play Forward	32435
CS-11280	Administrator role Scripts permissions reset to Protected when running DBUpgradeSchema.sql	Permission	
CS-11432	Exception when running some reports	Reports / Custom Reports	
CS-11288	Issues with Relative Date-Only Comparison Filter in Custom Reports	Reports / Custom Reports	32553
CS-11319	Unable to Archive Scheduled report with XLS format	Reports / Scheduled Report	38524
CS-11348	Logging in as LDAP user that doesn't exist in CSWEB fails instead of adding the user to CSWEB	Security / Login	
CS-11341	Bug when logging in as LDAP user if customer role is missing?	Security / Login	
CS-11340	Identity Provider is not set to LDAP when CS user is created by logging in as LDAP user?	Security / Login	
CS-5009	Service dropdown menu is not displaying fully after clicking the Cancel button.	Templates / Subcomponents	
CS-11388	"Customer"-type user passwords are stored as plaintext in the PasswordSalt field	User Management / Security	
CS-11139	Provisioning: Connect ports disappear after changing Connection type.	Workflow / Provisioning	32209
CS-11145	Unable to edit Network fields in the Provisioning	Workflow / Provisioning	

CS-11175	[Workflow] Admin task encounters console error when changing to any Task Status	Workflow / Tasks	
----------	---	------------------	--

12.3 List of Enhancements in 12.3.2

Item Key	Summary	Cormant Component	Customer Case Number
CS-11441	Add ability to include extra Space root in the SQLite DB	Offline Sync Service	

12.4 List of Bugs Fixed in 12.3.2

Item Key	Summary	Cormant Component	Customer Case Number
CS-11470	When syncing data from Android to CS Server, the Play Forward process created a duplicated cable where it should just update an existing one	Offline Sync Service	
CS-11471	When syncing data from Android to CS Server, the Play Forward process does not create the cable with the correct barcode value	Offline Sync Service	

12.5 List of Bugs Fixed in 12.3.1

Item Key	Summary	Cormant Component	Customer Case Number
CS-11310	Plan View reloads when a rack equipment of the current plan is clicked on the plan	Plan View	

12.6 List of Enhancements in 12.3.0

Item Key	Summary	Cormant Component	Customer Case Number
CS-10716	Move "Enable Data Centers" tab from Alerts Module to Admin > Configuration Module	Alerts / Configuration	
CS-10715	Move Thresholds tab from Alerts Module to Admin > Configuration Module	Alerts / Configuration	
CS-10720	If a role loses Full permission on Alerts and has active subscriptions, then the existing subscriptions should be removed	Alerts / Subscriptions	
CS-10779	Add comments to Environment settings on CSWeb Settings.config file	Application	
CS-10853	Replace iTextSharp with IronPDF library (due to licensing)	Application	
CS-10908	Some DLLs have vulnerabilities and should be upgraded	Application	31997
CS-10858	Remove jqGrid from CS and HH code due to licensing	Application	

CS-10854	Replace AndersonImes.ServiceProcess DLL because it is no longer licensed	Application	
CS-10805	Add Missing licenses for some DLLs	Application	
CS-10575	Upgrade the remarkable-bootstrap-notify library to resolve jquery deprecation warnings	Application	
CS-10459	Find and resolve jquery deprecation warnings	Application	
CS-10021	Display feedback to user RE Dev vs Prod instance	Application	
CS-10530	In the Connections tab > Channel Details View, nothing happens when trying to Export to CSV	Assets / Connections	
CS-10408	On Assets Module, add ability to Import/Export components using Component ID	Assets / Details	
CS-10407	On Assets Module, expose Component ID system-attribute in the UI	Assets / Details	
CS-10548	Improve Component Export speed by loading Space Paths more efficiently	Assets / Exports	
CS-10741	Improve performance of Plan View loading / saving by avoiding duplicate loading of entities	Assets / Plan View	
CS-9614	Improve time it takes to save a Plan View by not returning the full component hierarchy after saving	Assets / Plan-view	
CS-10844	When exporting a Floor Plan, the names of devices should be completely shown	Assets / Plan-view	
CS-10065	Log Plan View actions in History	Assets / Plan-view	
CS-2551	Selected items in Edit mode on floor plan are difficult to see	Assets / Plan-view	
CS-10763	Add ability to export Floor Plan as an image	Assets / Plan-view	
CS-7748	Loading a Rack row is very slow (in rack view).	Assets / Rack View	
CS-7801	Pre-process template images to improve Rack View performance	Assets / Rack View	
CS-10766	In the Add New Tasks dialog, for Install Task Type, add a validation preventing the tasks to be created if the selected components are not in a Workflow Store Room	Assets / Search	
CS-10946	Assets Barcode Search Functionality	Assets / Search	32020
CS-8032	Improve speed of SP that gets Space Path for multiple components	Assets / Search	
CS-10587	In the Assets Search, include Component ID to be available in the search criteria	Assets / Search	
CS-10312	From Assets > Search Results tab, add ability to link multi-components into an album	Assets / Search	

CS-10262	From Assets > Search Results tab, add ability to create Workflow Tasks	Assets / Search	
CS-10737	In the Attribute Configuration page, for new Datetime Attribute type, the Default Value should be changed from "Today" to "Now"	Attributes / Configuration	
CS-10546	Add a new Attribute Data Type to support IP Address attributes	Attributes / Configuration	
CS-10164	Add ability to define Uniqueness type-property	Attributes / Configuration	
CS-10163	Add a new Attribute Data Type to support MAC Address attributes	Attributes / Configuration	
CS-10160	Add a new Attribute Data Type to support DateTime attributes	Attributes / Configuration	
CS-10689	Port Unique attribute support to Offline HH	Attributes / Configuration	
CS-3619	Ability to make attributes unique	Attributes / Configuration	26109
CS-10266	Add support for Audit Connections on Offline	Audit / Connections Audit	
CS-10895	Changes by Audit should have history log Source as Audit	Audit Module	
CS-8255	Implement way of telling if device image changed	Device Images / Details	31347
CS-10576	Add logic to check permissions on places that use Scheduled Report Folders	Historical Report	
CS-10482	In the Saved Attributes configuration, it would be good to display the last time the Historical process run for each attribute	Historical Report	
CS-10413	Add logic to check permissions on places that use Historical Report Folders	Historical Report	
CS-10412	Add ability to set Permissions for Historical Report Folders	Historical Report	
CS-10706	Add logs when user Run reports and when Exporting Components data	Logs / Report History	
CS-10705	In the Admin > Logs, add a new Reports History tab	Logs / Report History	
CS-10747	In the Query Device dialog, add ability to display OID in the dialog	Network Discovery / MIB Files	
CS-10746	In the Query Device dialog, add a Quick Search input field so that users can easily search Mib table	Network Discovery / MIB Files	
CS-11130	Change port used by CS Offline to other port that is not commonly used to avoid conflicts in Windows	Offline / Application	
CS-10722	Add message on DB sync screen telling user to update Android app if CS on server is on newer version	Offline / Application	
CS-10308	Add ability to include extra spaces in the Sync Profile	Offline / Application	31936

CS-10265	Add ability to support many active Sync Profiles on Android	Offline / Application	
CS-6832	Add validation of changed attributes to asset details editing	Offline / Assets	
CS-10832	Add support for new attribute data types, IP Address, MAC address and DateTime to Offline HH	Offline / Assets	
CS-10903	Include open source license notices in Android HH app	Offline / Code Licensing	
CS-10889	Add ability to play-forward audit discrepancies in the Offline Sync Service	Offline Sync Manager / Play Forward	
CS-10561	Optimize memory consumption of custom reports that have space/template filters	Performance	
CS-11045	Permissions Level with the Cut/Copy and Paste Operations	Permission	31675
CS-10704	[Backend] Add ability to disable Export function for specific Roles	Permissions	
CS-10703	Add ability to disable Export function for specific Roles	Permissions	
CS-10857	In the Permission Reports page, add logic to generate and display Scheduled Report Folders permission report	Permissions Reports	
CS-10811	In the Permission Reports page, add logic to generate and display Exports report	Permissions Reports	
CS-10528	In the Permission Reports page, add logic to generate and display Historical Report Folders permission report	Permissions Reports	
CS-10527	In the Permission Reports page, add logic to generate and display Custom Report Folders permission report	Permissions Reports	
CS-10526	In the Permission Reports page, add logic to generate and display Space Permission report	Permissions Reports	
CS-10525	In the Permission Reports page, add logic to generate and display Zones Permission report	Permissions Reports	
CS-10524	In the Permission Reports page, add logic to generate and display Attribute Groups Permission report	Permissions Reports	
CS-10523	In the Permission Reports page, add logic to generate and display Modules Permission report	Permissions Reports	
CS-10521	Add new tab to manage Permission Reports	Permissions Reports	
CS-10657	Add ability to send an Email Report to many emails	Reports / Scheduled Report	
CS-10503	Change the UI moving report fields to a new tab	Reports / Scheduled Report	
CS-10493	Add ability to copy/cut/paste on Scheduled Reports	Reports / Scheduled	

		Report	
CS-10492	Add ability to use drag and drop on Scheduled Reports	Reports / Scheduled Report	
CS-10490	Add ability to organize Scheduled Reports using report folders	Reports / Scheduled Report	
CS-10559	Add ability to set Permissions for Scheduled Report Folders	Reports / Scheduled Report	
CS-10886	Add REST API endpoints for audit discrepancies	RESTAPI	
CS-10684	REST API endpoint to set the User Account and Password of an EDIS Module / Sync	RESTAPI	31759
CS-10742	Ensure the displayed LastHistoricalRun is correct even when the user is in a different timezone of the server	Saved Attributes	
CS-10642	In the Saved Attributes page, add "Last Historical Run" field	Saved Attributes	
CS-11093	When adding a component (from Create or Assign Barcode dialog), add ability to autofill the Name field when the selected template has Barcode Link and there's a valid Barcode	Scan & Assign	
CS-11073	In the Web Service Guide, include extra information about some SNMP methods to avoid confusion	SOAP API	
CS-10583	Ensure the SOAP API methods for Reports apply validation properly - which should consider the Reports Module and Report Folder	SOAP API	
CS-10509	DB Tools > Check Database, Rearrange the UI to be clearer and more intuitive	System Settings / DB Tools	
CS-10738	The settings for environment information should be persisted so that reinstalling CS doesn't require reconfiguring that again	System Settings / General	
CS-7294	Put a search field to be able to type in the Username instead of scrolling to find the name	System Settings / OAuth	
CS-10187	Add ability to include Thresholds to other templates (e.g. children) easily	Templates	
CS-10588	Add ability to link many thresholds to templates	Templates	
CS-9597	Configuration > Templates > Attributes - display attributes Unit of Measure (UOM) beside attributes	Templates / Attributes	
CS-10185	Add ability to include Scripts to other templates (e.g. children) easily	Templates / Scripts	
CS-10804	Request to Increase the Requirement of characters set for Password Complexity	User Management / Security	31795

CS-6998	Option to Hide Alerts module per Role	User Management / Security	28102
CS-10809	In Users & Roles > Permissions tab > Attribute Groups section, improve Workflow attribute groups	User Management / Users and Roles	
CS-10654	In the User Management → Permission tab, hide the option regarding Sandbox	User Management / Users and Roles	
CS-9637	On Admin → User Management → Users & Roles tab, make the Users the default tab (not Details tab)	User Management / Users and Roles	
CS-10655	When creating a new Role, add ability to reuse Permissions from another role	User Management / Users and Roles	
CS-10263	On Select Order dialog, add ability to create a new Order	Workflow / Order	
CS-10683	Validation so that WF Task Create dialog Customer Questions with Required attributes do not allow user to save	Workflow / Task Details	31760
CS-10764	Change the logic on Rename Task Types to require Device Name only for "In Progress" and "Complete" status	Workflow / Task Details	
CS-10734	In the Assets > Workflow tab, the Rename button for an Install Task should be enabled	Workflow / Task Details	
CS-10847	[Workflow: Importing Task] Users will be allowed to import a rename task with an empty device name.	Workflow / Task Details	

12.7 List of Bugs in 12.3.0

Item Key	Summary	Cormant Component	Customer Case Number
CS-8373	User should only Select one threshold at a time	Alerts / Configuration	
CS-11003	Missing vertical scroll in Alerts	Alerts Module	
CS-10902	Alert export file is empty	Alerts Module	
CS-9713	Restriction message must be shown when the filegroup directory reached or will exceed the limit value	Assets / Albums	
CS-10368	Moving a Site with a assets actively used in WF causes an error	Assets / Components	31349
CS-10415	Multi-disconnect information is not quite right when user lacks permission to view cables	Assets / Connections	
CS-10278	Connections tab content still shows even when it is set to hidden	Assets / Connections	
CS-8628	After disconnecting one, channels expand after refresh (JS Tree Upgrade)	Assets / Connections	
CS-10917	Connects tree not loading if user lacks permission to some connected	Assets / Connections	

	components		
CS-10475	Possible to click action buttons while changing components in Edit mode	Assets / Details	
CS-8590	Clicking 'Edit' button while loading will assume that the tab is in edit mode	Assets / Details	
CS-10750	Discovered Device Details Dialog throws an error and doesn't show any information about the device	Assets / Discovery	
CS-10698	[Assets > Discovery] An error occurs when trying to Link a found component to a Port	Assets / Discovery	
CS-7494	Disable right click options for components that are shown as **Permission Denied** in the History	Assets / History	
CS-7455	When selecting another space of history logs to export, the component name of its filename does not change	Assets / History	
CS-7397	The Change Details (right-panel) remains visible even when the main table grid has no results to display	Assets / History	
CS-7267	Filtering History logs by certain Template Types has unexpected results	Assets / History	
CS-7548	Import Disconnect is grouped as Connect	Assets / History	
CS-10773	Plan View camera angle resets after saving other tab	Assets / Plan View	
CS-10735	Plan View keeps complaining about invalid components that will be unpositioned even after saving multiple times	Assets / Plan-view	
CS-10718	Plan View takes an abnormal amount of time to load on larger DBs	Assets / Plan-view	
CS-10319	Plan View: Performance Issue on viewing and editing floor plan	Assets / Plan-view	
CS-7878	Plan View - Rack Front bolding not visible in Mobile form factors	Assets / Plan-view	
CS-6147	Clicking 'Cancel' button will save the changes made in the rack view.	Assets / Rack View	
CS-10970	ESC clears Quick Search input on top bar, but does not reset tree to unfiltered state	Assets / Search	
CS-10873	After linking components to the newly created album, there should be a notification that components are linked	Assets / Search	
CS-10814	With split screen, when searching for an exact match, the Search Results should not become the current tab in the middle or right panel	Assets / Search	
CS-10695	If there is a previous search, Asset Search is reloaded after adding or deleting component/s	Assets / Search	
CS-7537	Notification errors shown when invalid characters entered in the Search field	Assets / Search	

CS-10815	Unable to do a search that includes Space Path	Assets / Search	
CS-11097	In the Attribute Group page, system-attribute groups has the Edit button wrongly enabled	Attributes	
CS-10818	Action buttons of the parent nodes under the Attributes tab are enabled	Attributes / Configuration	
CS-10933	After searching then creating an attribute, the attribute is not included in the tree	Attributes / Search	
CS-10401	After searching then creating an attribute, it's not shown in the filtered tree	Attributes / Tree	
CS-7670	Audit Connections history log	Audit / Connections Audit	
CS-11118	Cancelling connection discrepancy resolve still changes the discrepancy	Audit / Connections Audit	
CS-11070	Resolving connection audit discrepancy is not connecting expected ports	Audit / Connections Audit	
CS-11033	Error when scanning Equipment barcode to skip the port	Audit / Connections Audit	
CS-11069	Assigning barcode to existing component in Audit should have Audit log Source	Audit / Equipment Audit	
CS-11019	In the Audit Module, when changing the tab from Discrepancies to Details tab, the tree is reloaded. Is this correct?	Audit Module	
CS-10834	No notification when searching for a component that does not exist	Audit Module	
CS-10877	Console error encountered when navigating from Assets to Audit Discrepancies tab	Audit Module	
CS-10984	Calculated Attributes service stops working after a Network issue or SQL connection is down even if it's already resolved.	Calculated Attributes Service	31930
CS-10473	When running CheckDB to detect Illegal Connections in the database, it throws a Time Out error	Check DB	
CS-10861	When setting the Config permission to None, the Configuration sub-item menu is still visible	Configuration	
CS-2557	OK button of the Historical Report Viewer does not respond when clicked	Historical Report	
CS-5966	Performance issue if the Component/Rack has script that will execute When Modified	Import Components	
CS-10898	Network Discovery Service fails to find devices if one of the addresses in the IP Range times out	Network Discovery	
CS-10840	Unable to edit Discovery attribute mapping	Network Discovery /	

		Attribute Mapping	
CS-10636	Some keyboard shortcuts are usable even if the associated context menu item is disabled	Offline / Assets	
CS-10635	Copy/pasted component is created without subcomponents if an error occurs [cs offline]	Offline / Assets	
CS-10870	Removing date values results on error when saving	Offline / Assets	
CS-11080	Scanning an existing barcode won't load the cable details. It needs to click anywhere in the dialog before it loads	Offline / Connections	32162
CS-10612	When connecting ports in connections tab, hitting enter button won't go to the next found node in template lookups.	Offline / Connections	
CS-10613	Quick search of components with multiple results is not working the second time	Offline / Quick Search	
CS-10975	0 results when searching for ports with multiple results	Offline / Search	
CS-10813	Connection beep sound does not work on windows client or browser	Offline / Windows	
CS-11047	Unable to edit text fields after clicking 'OK' on the data-loss warning dialog	Offline / Windows	
CS-5758	Investigate potential Memory leak in Report Caching?	Report Caching	27301
CS-5756	When there are a lot of reports enabled for caching in CSWEB the CormantCSReportCachingService stops	Report Caching	27301
CS-10467	Scheduled Report is being created in an invalid state	Reports / Scheduled Report	
CS-6913	Clicking Cancel on the Edit Sync Profile dialog will not cancel the changes made by the user	Role Management / Sync Profiles	
CS-10663	Console error when clicking 'OK' on the Select Attribute window without selecting any attributes	Saved Attributes	
CS-10784	The scripting service stops intermittently	Scripting Service	
CS-10845	New ChangeHistory endpoints do not return data	SOAP API	
CS-10514	Some methods related to SNMP doesn't work properly (SOAP API and Scripting)	SOAP API	
CS-10755	On Templates Config, after adding a new template with a filtered tree, the template should be shown in the tree	Templates	
CS-9478	Some options in the context menu are enabled for parent node 'Workflow' and 'Album'	Templates	
CS-11056	Can't add new required attributes to existing components	Templates / Attributes	
CS-10707	Copying a template does not log to Configuration History	Templates / Logs	

CS-10906	Unable to save Template Script when Start Date is set with no end date	Templates / Script	31966
CS-10752	[Config] First script in the list, does not display the script name on edit mode	Templates / Scripts	
CS-10687	In Template Script Configuration, the input search of the dropdown dialog should be aligned to the Script text	Templates / Scripts	
CS-10441	Date validation when configuring Periodic scripts is inconsistent	Templates / Scripts	
CS-10900	ENTRA ID 2FA prompt does not work when using HTTPS.	User Management / Security	31922
CS-10634	A role with that has "/" character in the name can not be accessed	User Management / Users and Roles	
CS-11087	The script tab on the template module doesn't have permission if the admin permissions are set to none.	User Management / Users and Roles	32140
CS-10709	It's possible to disable an Identity Provider when it is in use for a Role or User	User Management / Users and Roles	
CS-10897	In the Permissions tab, component-attribute groups that do not have attributes on it are not shown in the UI	User Management / Users and Roles	
CS-10727	On Admin > User Management > Permissions tab, the data for Permissions is out of date	User Management / Users and Roles	
CS-7329	Clicking 'Cancel' on the browser prompt when navigating to different role will disable the other permission dropdown	User Management / Users and Roles	
CS-10829	[Admin - Users] Copy to Clipboard is not working	User Management / Users and Roles	
CS-10884	Workflow > Device Details > Rename button still enabled after renaming device	Workflow / Device Details	
CS-7851	Slot Number changes to Original Slot Number when in Edit mode	Workflow / Device Details	
CS-10909	[Workflow import] The device name should not inherit the original name	Workflow / Device Details	
CS-2282	Running/exporting reports causes Cormant-CS Business Service memory to increase significantly. This causes the client and web to stop responding	Workflow / Exports	32064
CS-10461	Inaccessible port name is shown in clear text in some places and is missing in others	Workflow / Provisioning	
CS-10616	The name of components to which the user doesn't have view permissions are shown in clear text in Provisioning tab	Workflow / Provisioning	
CS-10615	The name of components to which the user doesn't have view permissions are shown in clear text in Provisioning Details dialog.	Workflow / Provisioning	

CS-10296	The value of the Slot Number in the Source Location shows an incorrect value but shows the correct value in EDIT mode.	Workflow / Task Details	31370
CS-9823	Canceling an install task with the option to rename the device name generates a new task.	Workflow / Task Details	30893
CS-11091	Print Task > Patch Schedule shows a blank page.	Workflow Manager	32182
CS-11061	WF tasks grid won't refresh to display the changes by Actions	Workflow Manager	
CS-11011	Green highlight is not visible on rows with gray background	Workflow Manager	
CS-10969	Workflow tasks are not highlighted in the task table according to Scheduled Date	Workflow Manager	

12.8 List of Bugs in 12.2.1

Item Key	Summary	Cormant Component	Customer Case Number
CS-10900	Entra ID 2FA prompt does not work when using HTTPS	Security / Authentication	31922

12.9 List of Enhancements in 12.2.0

Item Key	Summary	Cormant Component	Customer Case Number
CS-2961	To provide the information about the delete process when deleting large spaces with components and connections	Assets / Components	
CS-2374	Enhancement Request for the Imports Feature	Assets / Components	25150
CS-3791	Needs Import progress icon/bar in CS Web Import	Assets / Components	
CS-9885	Add real-time capabilities to the app using SignalR	Assets / Components	
CS-9859	When Deleting a component, open a dialog with a progress bar	Assets / Components	
CS-9860	When importing a file on CSWEB, open a dialog with a progress bar	Assets / Components	
CS-9726	Improvement for the multiple disconnect feature to disconnect cables without the need of specifying the destination ports.	Assets / Connections	30749
CS-10097	[UI] Consistency in the Confirmation to disconnect dialog	Assets / Connections	
CS-8767	Add Cancel-able Waiting Spinner to Asset History	Assets / History	

CS-10191	Editing name of component in Search Results should optionally rename subcomponents	Assets / Search	
CS-8483	Enhance the ability of CheckDB tool to detect invalid date values	Check DB	29929, 30399
CS-10014	Replace custom date/time pickers with browser-based pickers	CSWeb	
CS-10391	Improve Historical Report Lookup to show folders	Dashboard	
CS-10057	Add Cylinder fill chart to dashboards, using same config options as for Meter types.	Dashboard	
CS-8880	Add Thermometer chart to dashboards, using same config options as for Meter types.	Dashboard	
CS-10056	Add Vertical LED chart to dashboards, using same config options as for Meter types.	Dashboard	
CS-10620	Consistent change history logging when a record is edited but not changed?	Logs / Administration History	
CS-10207	Set the logging of EDIS Service logs to use standard filename date suffix format as YYYYMMDDHhMmSs.Ns	Logs / EDIS Logs	31306
CS-10367	In the Login History page, add ability to show when someone tried to login passing an invalid "redirect URL" parameter (malicious agent)	Logs / Login History	
CS-10366	On Login History page log, include a new Reset button in the filter section	Logs / Login History	
CS-10430	Add server-side pagination to Scripting Logs page	Logs / Scripts	
CS-10547	Improve the Script dropdown field to use a Filtered Dropdown	Logs / Scripts	
CS-9861	In the Admin > Logs > Scripts page, improve how the table is refreshed based on the Auto-Updates feature	Logs / Scripts	
CS-10365	Make Scripting Logs use server-side filtering so that it's possible to easily look for old data	Logs / Scripts	
CS-9890	In the Admin > Logs > Scripts page, investigate why the Filter does not always work as expected	Logs / Scripts	
CS-10547	Improve the Script dropdown field to use a Filtered Dropdown	Logs / Scripts	
CS-10336	Replace custom date/time pickers with browser-based pickers	Offline / Assets	
CS-9096	Mobile - Scan and Assign - Add Asset RU and Template data	Offline / Assets	
CS-8544	pagination is inconsistent with CS Web	Offline / Assets	
CS-10321	Offline HH > Settings > Sync Service Address field validation	Offline / Assets	
CS-7129	Implement logic for the "Sort by Rack Unit" feature (Context menu)	Offline / Assets	

CS-10307	On Offline, improve Space Lookups to display Filtered Results (same as CSWEB)	Offline / Assets	
CS-10306	On Offline, improve Template Lookups to display Filtered Results (same as CSWEB)	Offline / Assets	
CS-10305	On Offline Android, include missing features on Assets Tree and Create and Assign Barcode dialog	Offline / Assets	
CS-8064	Ensure that the improvements done by CS-7796 and CS-7762 are also applied on Android	Offline / Assets	
CS-8557	Port CS-8491 and CS-8492 to Android handheld	Offline / Assets	
CS-10585	Change style of the Settings buttons on login page	Offline / Login	
CS-10320	Create a Windows installer for CS Offline	Offline / Windows	
CS-10477	Add a Loading Spinner to Custom Reports	Reports	
CS-10476	Add more information on Administration History when editing Reports	Reports	
CS-10389	Add ability to use drag and drop	Reports	
CS-10388	Add ability to use Keyboard shortcuts	Reports	
CS-10201	Report Viewer - Add support to sort by column headers	Reports / Custom Reports	
CS-10261	Report Viewer - Add support to sort by column headers when attributes show count or sum	Reports / Custom Reports	
CS-10429	Custom Report part of report tree loads very slowly	Reports / Custom Reports	
CS-10269	Report Viewer - Add support to sort by column headers in Details view	Reports / Custom Reports	
CS-10479	In the Reports > Historical Report, the Attribute dialog should display only Saved Attributes, not all existing attributes	Reports / Historical Report	
CS-7070	Ability to add Folders for Historical Reports.	Reports / Historical Report	28133
CS-9479	Add pagination support to REST API /ComponentAttributes endpoint	REST API	
CS-10480	In the Saved Attributes configuration, the attributes tree should also display the attribute parent (in this case, the attribute group)	Saved Attributes	
CS-10114	Add ability to specify the Identity Provider for each User	Security / Authentication	
CS-10083	Add Guest User settings into CSWEB	Security / Authentication	
CS-10082	Add LDAP settings into CSWEB	Security / Authentication	

CS-10220	Add OpenID Connect (OIDC) configuration to Admin > User Management > LDAP & SSO tab	Security / Authentication	
CS-10222	Implement OpenID Connect for Azure AD SSO in CS Web using MS libraries	Security / Authentication	
CS-10093	Investigate the use of Azure AD to Authenticate and Authorize users	Security / Authentication	
CS-10667	Roles should have option for default Entity Provider	Security / Authentication	
CS-9874	Provide a validation when an Order with active tasks is deleted via API DeleteOrderByID.	SOAP API	30715
CS-9837	There should be an API validation when running DeleteTaskByID API	SOAP API	31617, 31506
CS-10186	The buttons on Thresholds and Scripts tabs do not have the same colors	Templates	
CS-9160	Show user roles in Login History and in the export file in order to be able to filter via user roles	User and Roles	30369
CS-10115	Add Azure AD SSO configuration to Admin > User Management	User Management / Security	
CS-10310	In the Admin > Users Managements > Users tab, add ability to export users table-grid	User Management / Users and Roles	
CS-10309	In the Admin > Users Managements > Users tab, add new columns in the table-grid	User Management / Users and Roles	
CS-9638	On Admin → User Management → Users & Roles → Users tab, improve the Role dropdown field to use a Filtered Dropdown	User Management / Users and Roles	
CS-9855	In the User Profile Settings, a non-admin user should not be able to change his email	User Profile	
CS-9769	Add basic "Rack Selector Scores" export in a Pop-up Dialog	Workflow / Rack Selector	
CS-9780	Improvements on the "Rack Selector Score" dialog	Workflow / Rack Selector	
CS-9777	In the "Rack Selector Scores" dialog, add ability to select the row, then update the Rack/Location field	Workflow / Rack Selector	
CS-9779	In the "Rack Selector Scores" dialog, add ability to show available slots of the Rack	Workflow / Rack Selector	
CS-9056	There should be a warning when Chassis are decommissioned and their blades have pending decomm tasks	Workflow / Task Details	30313, 30690
CS-10496	Workflow Submit Date Time attribute greyed out/disabled.	Workflow / Task Details	31461

12.10 List of Bugs Resolved in 12.2.0

Item Key	Summary	Cormant Component	Customer Case Number
----------	---------	-------------------	----------------------

CS-10294	User with Config-None permission, does not show the Album template icons properly	Admin / Album	
CS-9678	Cannot create an album when Template has required attributes	Assets / Album	
CS-9718	[Albums] Console error when dragging files around or on top of the Albums area	Assets / Album	
CS-10274	Unable to unlink the last linked component from an album (depending on permissions)	Assets / Album	
CS-10577	Assets > Albums > Edit button becomes enabled when it should remain disabled	Assets / Album	
CS-10598	When navigating to Albums tab after discarding changes on Details tab, the Albums tab shows the page in edit mode	Assets / Album	
CS-10669	Zone permission is not applied for Album custom required attributes endpoint	Assets / Album	
CS-10379	Optional Attributes in Add Components dialog does not load the default template attribute value	Assets / Components	
CS-10625	Copy and Paste Permissions of Users with a Required Attribute	Assets / Components	31675
CS-10678	Console error encountered when searching for existing cable or component in the Connections dialog	Assets / Components	
CS-8511	First created virtual cable of a template with barcode link has non-empty barcode	Assets / Connections	
CS-9028	Multiple connect on ports with patch schedule while Task is In Progress, should be restricted	Assets / Connections	
CS-9956	[Edge] Format dropdown on the Connections tab moves to the side when hovered	Assets / Connections	
CS-10313	Unable to make connection when creating sheath via multiple connect, restricted by WF task	Assets / Connections	
CS-10314	Deletion confirmation message contains inaccessible component name	Assets / Connections	
CS-10315	Multi-connect hangs in certain situations	Assets / Connections	
CS-10384	Connected range logic doesn't find connected range if one of the spaces is not accessible	Assets / Connections	
CS-10550	Error when using Multi Connect drag'n Drop "unsupported connectivity level..."	Assets / Connections	
CS-7986	Move notification should contain name of moved component	Assets / Details	
CS-8944	Text can be hidden within fields by using curly braces	Assets / Details	

CS-9303	There should be a restriction when 'Template Component' is used as Template	Assets / Details	
CS-9896	Copied component with default date value in its template show an invalid date value error	Assets / Details	
CS-10257	A validation error occurs when trying to Add Multiple Components with a Template that has default value in a date-type attribute	Assets / Details	
CS-10271	[Components] Inconsistent date-type attribute values in Component_Attrib table when adding vs updating	Assets / Details	
CS-10292	Errors encountered when the user has Components-None permission	Assets / Details	
CS-10193	Wrong tab shown after quick searching for component then clicking on health card	Assets / Healthcards	
CS-9554	In Asset History, date attributes are not being displayed in the user's chosen date format	Assets / History	
CS-9562	In Asset History, date attributes are not stored in ISO format	Assets / History	
CS-10674	[Move Here] Console error encountered after valid component is entered in the input search when Auto Advance is OFF	Assets / Move Here	
CS-9887	[Planview] Other tab does not get updated when adding / removing / changing image of plan view	Assets / Plan-view	
CS-9899	[Planview] Error when updating the floor plan on a different panel after deleting on the other one	Assets / Plan-view	
CS-10060	[IOS] 'Rotate' button in the Plan View is not working using iPhone	Assets / Plan-view	
CS-9686	[Assets > Search Results] After deleting a component, the component is still visible in the Search Results tab	Assets / Search	
CS-10194	Clicking twice on a search result cell while in Edit Mode shows data loss confirmation dialog	Assets / Search	
CS-10236	[Assets Search] Order of records on the printable page do not match what is shown in the search result table	Assets / Search	
CS-10298	On Assets Search, the date filter criteria doesn't work when providing just the Date From	Assets / Search	
CS-10602	[Search] Error when saving Search filters	Assets / Search	
CS-10650	[Quick Search] 0 results when searching for ports with multiple results	Assets / Search	
CS-10433	[SNMP Configuration] In the Assets > SNMP Configuration dialog, the SNMP Version is not saved properly	Assets / SNMP	
CS-10280	[Asset] 'History' tab keeps on showing after setting the Workflow permission to 'Hidden'	Assets / Tabs	

CS-10007	[Attributes] Consistency of validation for Alpha-type attributes	Attributes / Details	
CS-10595	Modifying Attributes does not take effect if the User who modified the changes is the User under the new role created.	Attributes / Details	31626
CS-10303	[Attributes] Copy pasting when the Attributes tree is filtered generates console error	Attributes / Tree	
CS-9738	On Scripts page, an error occurs after selecting a node, and then try refreshing the page	Configuration / Scripts	
CS-7745	User without access to CSWEB setup as SSO (AD login) gets directed to a Login dialogue over a Blank page	CSWEB	28600
CS-10226	Pagination page numbers formatted incorrectly	CSWeb	
CS-10431	[Dashboard] In the Alert Summary Widget, the Orientation input field doesn't work as expected	Dashboard	
CS-10554	[Dashboard] Tooltips on Planview widget don't disappear when hovering outside of the widget box	Dashboard	
CS-10470	Multi-line errors are not shown in multiple lines on notification	Error Message	
CS-10581	[Import] Unable to import connections using CSV file, generates a 'Stream was not readable.' error	Imports	
CS-10653	Uniform logging of changes in Reports	Logs / Administration History	
CS-10700	[Configuration History Logs] Move Template entries shows the same From and To in the Description	Logs / Configuration History	
CS-10494	[Logs] No history entry when logging in with incorrect Username	Logs / Login History	
CS-7658	Monitoring the Scripts Log hogs all memory resource over time	Logs / Scripts	28168
CS-10332	[MIB Files] Error on left panel when clicking on MIB files tab	Network Discovery / MIB Files	
CS-10143	Port hidden text fix to Android	Offline / Assets	
CS-10322	[Android] Subcomponents are not created in CS after encountering the error 'attribute not being a valid date value'	Offline / Assets	
CS-10323	[Android] Unable to sync components with default date values from Android to Web	Offline / Assets	
CS-10324	[Android] Creating multiple components using template with default date value causes an error	Offline / Assets	
CS-10405	[Android] The sorting of components in the Assign Component lookup tree	Offline / Assets	

	ignores the 'Sort by Rack Unit' feature		
CS-10406	[Android] Error when syncing renamed cable from Android to CS Web	Offline / Assets	
CS-10501	[CS Offline Windows] Unnecessary horizontal scroll bar on the Sync Management page	Offline / Assets	
CS-10502	[CS Offline Windows] Doing a quick search while in Sync Management page returns a blank screen	Offline / Assets	
CS-10531	In the Cormant-CS Offline available on Windows, the Template Lookup requires wildcard to search correctly. In practice, it should not.	Offline / Assets	
CS-10586	[CsOffline - Windows] Search results page has an empty left panel on large resolutions	Offline / Assets	
CS-10053	On small screens, long tree text overflows to the right beyond the tree background image	Offline / Connections	
CS-7441	Incorrect file extension when Report Title uses an apostrophe	Reports	28154
CS-10033	[Reports] "Unable to Complete Request" error page is shown when the report name includes the word "index".	Reports	
CS-10592	In the Reports Module, there are no notifications when a report is saved	Reports	
CS-10563	[Reports] Name on the reports tree and center page is not updating after renaming it under Details tab	Reports / Custom Reports	
CS-10564	[Reports] Console error when exporting a meter chart with no data	Reports / Custom Reports	
CS-10596	[Reports] When saving a report with a new report folder, the tree is not updated	Reports / Custom Reports	
CS-10597	[Reports] When renaming a report, the tree is not updated properly	Reports / Custom Reports	
CS-10658	[Reports] Export format dropdown should be disabled when no data is found	Reports / Custom Reports	
CS-10626	No Saved Attribute is selected when searching	Reports / Historical Report	
CS-10481	[Historical Reports] It isn't possible to copy a Historical Report	Reports / Historical Reports	
CS-9978	[Reports] Running standard reports with an invalid date value generates an unfriendly error	Reports / Standard Reports	
CS-10295	On REST API, endpoints for Updating and Creating Component Date Attributes should be consistent	RESTAPI	
CS-10614	Unexpected behavior after deleting the last Saved Attribute	Saved Attributes	
CS-10383	Deadlock causes data fetch to fail in case Scripting Service is adding too	Scripting Service	

	many logs very frequently		
CS-10545	[Scripts] Saving twice on the Templates tab results to an 'Object reference error will show'	Scripts / Details	
CS-10549	[Scripts UI] When collapsing the Details section, a blank space appears in the end of the page	Scripts / Details	
CS-10334	CS Web is vulnerable to Open Redirection attacks	Security	
CS-10135	Unfriendly error message when using Windows Authentication without a matching CS user	Security / Login	
CS-10491	[Login] No UI validation when logging in with incorrect Username	Security / Login	
CS-10045	SOAP API does not return error when trying to connect port that is disabled	SOAP API	
CS-10325	[SOAP API] ComponentServices.GetLegacyChangeHistoryItems does not work	SOAP API	
CS-10326	[SOAP API] ComponentServices.GetChildComponentsByIDType does not work	SOAP API	
CS-10327	[SOAP API] ComponentServices.GetChildComponentsByNameType does not work	SOAP API	
CS-10339	[CSWEBAPI] GetAttributeGroupByID and GetAttributeGroupByIDs does not return values	SOAP API	
CS-10132	[Mail settings] Username and Password fields are automatically set	System Settings / Mail Settings	
CS-8925	[Templates] Error when updating and saving all attributes of a template in one go.	Templates / Attributes	
CS-10544	The import passes the validation check but then fails to import.	Templates / Export - Import	00031625
CS-10686	"Script is required", error message is gone, now a warning notification	Templates / Scripts	
CS-10134	Guest users not logged-out when disabling guest user access	User Management / Security	
CS-10136	[Workflow] Updating device Rack/Location does not clear up Unit Location on the first time	Workflow / Device Details	
CS-10460	Error is thrown when trying to open the dialog for a Patch Schedule that is connecting to inaccessible component	Workflow / Provisioning	
CS-10460	Error is thrown when trying to open the dialog for a Patch Schedule that is connecting to inaccessible component	Workflow / Provisioning	
CS-10496	Workflow Submit Date Time attribute greyed out/disabled.	Workflow / Task Details	31461

12.11 List of Enhancements in 12.1.0

Item Key	Summary	Cormant Component	Customer Case Number
CS-9857	Cormant-CS should be able to generate a 6-digit code to allow Two-Factor Authentication	Security / 2FA	
CS-9761	In the Mail Settings tab, add validation preventing Email Server Details to be deleted in case 2FA is enabled	Security / 2FA	
CS-9762	When enabling Two-Factor Authentication, the Admin user should be able to test if Email Server is working (new dialog)	Security / 2FA	
CS-9763	The Admin user should be able to bypass 2FA (i.e. disable) for a specific user	Security / 2FA	
CS-9764	In the User Profile Settings, allow the user to know their 2FA status (enabled or not)	Security / 2FA	
CS-9765	When the Admin user enables Two-Factor Authentication, the system should set the 2FA status on each user	Security / 2FA	
CS-9766	When creating a new user, the system should default the 2FA status for that user based on the global 2FA status	Security / 2FA	
CS-9768	When trying to log-on on CSWEB, the user should be able to set if the authorization should be remembered in that browser	Security / 2FA	
CS-9878	Send 6-digit token to the user via email with instructions on how to proceed	Security / 2FA	
CS-9879	In the Security page, the admin should not be able to enable 2FA if the user is using Single Sign-On (Windows Authentication)	Security / 2FA	
CS-9883	Ensure 2FA is not applied on any case using APIs	Security / 2FA	
CS-9916	When the Admin user disables 2FA globally, the system should not change all users 2FA status	Security / 2FA	
CS-9997	Add traceability when user tries to log-in on CSWEB using 2FA - New status options on Login History	Security / 2FA	
CS-9998	Show SSL validation notification before 2FA confirmation dialog	Security / 2FA	
CS-5813	[Web] Setting Values on Low and High Thresholds in Alerts Module	Alerts / Thresholds	27349
CS-10022	[Albums] Disable the other panel's buttons when the Album on the other panel is in edit mode	Assets / Album	
CS-10151	Improve text in Deleted Selections dialog	Attributes / Details	
CS-8209	No Restriction when deleting an item from the selection list of Selection type	Attributes / Details	29775, 30160,

	attribute		30760
CS-10026	Lookup for selecting attributes should select nodes on search	Attributes / Search Picker	
CS-9852	Add filtered search to SingleValueLookup that uses Chassis Source Type	Components / Assets Search Picker	
CS-9853	Add filtered search to SingleValueLookup that uses Order Source Type	Components / Assets Search Picker	
CS-9854	Add filtered search to SingleValueLookup that uses Icon Source Type	Components / Assets Search Picker	
CS-4162	Fix security vulnerabilities by upgrading jQuery, Moment, and Bootstrap	CSWEB	
CS-9346	Increase the character limit of Widget name	Dashboard	
CS-10204	Clicking the Date field clears the value to show the date picker	Date and Time	
CS-10180	Add an option to Connections Import to skip Empty Ports when disconnecting	Import / Connections	
CS-2855	Update Marionette to v3.4+	Security Updates	
CS-4162	Fix security vulnerabilities by upgrading jQuery, Moment, and Bootstrap	Security Updates	
CS-10036	Expose SNMP async methods in SOAP API	SOAP API	
CS-10150	Update Scripting documentation so that it talks about async methods and config parameters	SOAP API	
CS-10157	SOAP API: New History Endpoint	SOAP API	
CS-10030	Adjust left panels that have informative Text so that they can be well-resized when using resizable panel	User Interface	
CS-9882	Improve the messages for some Asset tabs with blank pages.	User Interface	

12.12 List of Bugs Resolved in 12.1.0

Item Key	Summary	Cormant Component	Customer Case Number
CS-10073	[Albums] Showing the attachment's context menu and then clicking the History tab, displays blank page and generates console error	Admin / Album	
CS-10203	The last used template when creating an album is set automatically in the Album search criteria, Template field	Admin / Album	
CS-10202	[Admin Album] Album Template is not cleared when clicking the Clear button	Admin / Album	

CS-10131	Exporting Albums exports all of the items searched in the list	Admin / Album	
CS-10074	[Albums] Server error when opening an attachment that is deleted from the database	Admin / Attachment	
CS-10071	[Small Screen] Album attachment context menu under Admin>Albums is not showing	Admin / Attachment	
CS-9994	If FileStream DB was previous deleted, on Album Settings the user should be able to set Allow Upload Files to No	Album Configuration and settings	
CS-9376	[Albums] Setting 'Today' as default value for Date-type album attributes shows as 01/01/2001 on Assets module	Album Configuration and settings	
CS-10218	Cannot create an album with a date attribute set to a default date	Album Configuration and settings	
CS-10023	In the Admin > System Settings > Albums tab, the Quick Search field (from top-bar menu) shows the wrong placeholder text	Album Configuration and settings	
CS-10293	User with View-only permission to the component/space can link/unlink an album	Album Linking and Unlinking	
CS-9623	[Alerts Module] The vertical line of the resizable panel is not displayed	Alerts	
CS-10123	Alerts Export - display DC and Rack columns missing on Export	Alerts	
CS-10208	[Alerts] Unable to delete enabled Data Center	Alerts	
CS-3420	[Web] No restriction when creating a threshold with no Value Attribute or Max Value Attribute	Alerts / Thresholds	
CS-9228	Deleting the Color Range/s will also delete the Thresholds.	Alerts / Thresholds	30420
CS-10011	In the Thresholds some columns are not displaying the X icon properly	Alerts / Thresholds	
CS-9428	[Android] Exception error when updating template on the Android	Android / Assets	
CS-9414	[Android] Date attributes still consider the character length even though it is set to Date data-type.	Android / Assets	
CS-10090	[Android] On History tab, the From value is empty when changing a date attribute	Android / Assets	
CS-9413	[Android] Unable to add a component with default value on date fields	Android / Assets	
CS-9432	[Move Here] Date attribute not existing to the component shows invalid date	Android / Move Here	
CS-10067	Unfriendly error message when opening album file if filestream database exists but is offline	Assets / Album	
CS-10042	[Albums] Pressing the 'Enter' button when capturing images generates	Assets / Album	

	console error		
CS-9989	[Album] There's a typo when showing the validation message for Album File	Assets / Album	
CS-10078	[Albums] Attachments context-menu delete and rename actions are not disabled on edit	Assets / Album	
CS-10259	Albums not created according to the component's Zones permissions	Assets / Album	
CS-10154	Unconventional warning message style when template is blank	Assets / Components	
CS-10153	Error notification when changing Space lookup in Add Components dialog	Assets / Components	
CS-8984	Conduits tab leaves edit mode when adding or moving to a different tab on the other panel	Assets / Conduits	
CS-10173	Deleting cable via the Details tab results in Loading state of the Connections tab and the 'Unable to Complete Request' page	Assets / Connections	
CS-8898	Connecting ports when Connectivity is Disabled should be restricted	Assets / Connections	
CS-10096	Show the component's ports when the barcode is entered in the To Port	Assets / Connections	
CS-9980	[Import] The Connection Tree appears to be loading for 5-10 minutes	Assets / Connections	
CS-10258	Channel Detail View has error if part of the circuit is **Permission Denied**	Assets / Connections	
CS-10277	[Connections] Inconsistent permission when connecting virtual cables	Assets / Connections	
CS-8980	[Assets] Clicking OK on the data loss warning will let the other panel enables the Edit button.	Assets / Data Loss	
CS-10001	[Rack View] Navigating to different tab does not cancel edit mode	Assets / Data Loss	
CS-10216	Clicking 'OK' on the data-loss warning dialog causes the Rack View to leave edit mode when clicking different tab on the right panel	Assets / Data Loss	
CS-9127	Assets Details does not load the page if the Attribute has invalid data	Assets / Details	
CS-9042	"Service Environment" not aligned in Edit mode of Asset details	Assets / Details	
CS-9004	Changing Template in Assets Module prompts that there are Subcomponents to be deleted when there's None	Assets / Details	30295
CS-10095	In the Add Component dialog, the validation message for Template field is shown in the wrong place	Assets / Details	
CS-10137	Template field should highlight in red when adding component/s without a Template value	Assets / Details	
CS-10200	Selecting a template on an invalid or unknown cable brings up an Album templates selection instead of a Cable	Assets / Force Connect	31294

	templates selection.		
CS-9126	Changing the Attribute type for an Attribute that is being used by a Template can lead to invalid data. Should we allow that?	Assets / History	
CS-9904	[Planview] Add a space between the text restriction and the 'Select Image File' button	Assets / Plan-view	
CS-4674	Navigation confirmation appears while editing floor plan when clicking on ports in the Asset Tree	Assets / Plan-view	
CS-9547	Report - xpos, ypos and vertices report blank	Assets / Plan-view	
CS-10020	[Planview] Searching for a component with planview generates a console error	Assets / Plan-view	
CS-9846	[Planview] Navigating on nested planview while on edit mode does not show the data loss warning message	Assets / Plan-view	
CS-10072	[IOS] Context menu on the Rack View is not showing	Assets / Rack View	
CS-10047	[Rack View] Unable to click the 'Options' button after changing the Rack View to 'Rack Images Only'	Assets / Rack View	
CS-10152	[Rack View] Tooltips don't disappear after moving the equipment within the rack	Assets / Rack View	
CS-5837	Asset Search results is using wrong value for XPos and YPos and Vertices	Assets / Search	
CS-9105	[Search Results] No validation for system-defined numeric attributes when updated via the Search Results tab	Assets / Search	
CS-10075	Data-automation tag missing	Assets / Search	
CS-9739	[Search Results] Export button is still enabled when in Edit mode	Assets / Search	
CS-10048	Asset Search by XPos, YPos, Vertices not working as expected	Assets / Search	
CS-9187	Searching with multiple results from a different Site, if starting space specified is not All Spaces, does not show the root node	Assets / Search	
CS-10199	Search Results rows are not being highlighted according to save results (functionality that existed up to 9.4)	Assets / Search	
CS-10198	Saving empty value for numeric attribute in Search Results tab causes the state of the component after save to be inaccurate	Assets / Search	
CS-8403	Clicking again the active tab that is in Edit mode prompts the confirmation message in the right panel	Assets / Split Screen	

CS-9023	[Assets] No data loss warning when navigating from Rack View to Asset WF while in edit mode	Assets / Tabs	
CS-10210	[Assets] When one tab is set to Hidden, it's possible for the right panel to have no tabs.	Assets / Tabs	
CS-9218	Components are not shown when the tree is showing as shortened.	Assets / Tree	
CS-5928	When deleting an Attribute that's used as HH Attribute, unlink the Attribute in SystemSettings	Attribute / Details	
CS-9561	Attribute with a Selection Data type defaults to the 1st value from the Selection list when used in a Workflow template	Attribute / Details	30689
CS-8913	Selection type attribute must remove blank/space in the list when saved	Attribute / Details	
CS-10006	[Attributes] Error when copy-pasting required selection-type attribute with blank default value	Attribute / Details	
CS-10228	Validation Date attribute field is cleared when deleting a Handheld Attribute	Attribute / Details	
CS-10121	[Reports] The attribute lookup keeps previously checked attributes and needs the user to remove manually if they are not needed	Attributes / Search Picker	
CS-9804	When an attribute is deleted, the Report that uses it throws an error	Attributes / Tree	30899
CS-10138	Cursor focus is lost after making the first search in the Templates and Attributes pages	Attributes / Tree	
CS-6130	[Audit Quick Search] When a searched text has many possible results, cursor focus is lost in the quick search field	Audit Module	
CS-9265	Fix Calculated attribute service log data at info level, far too verbose	Calculated Attributes Service	
CS-7892	Workflow Settings don't have a resizable handle	Configuration	
CS-9939	[Configuration] Workflow Ref Data quick search field shows wrong placeholder text	Configuration	
CS-9932	[Dashboard] Component lookup field value still persists even after cancelling the changes on the Planview widget	Dashboard	
CS-9571	Workflow widget table exceeds dashboard widget content area	Dashboard	
CS-9983	SQL credentials shows in some Service logs when set on Debug mode	Database Wizard	
CS-10054	[Small Screens] 'Fix Errors' toggle button is not aligned with the other buttons	DB Tools	
CS-9957	Page unresponsive when clicking the check all checkbox in any EDIS module > Logs > Actions	EDIS UI	

CS-10213	[Admin Albums] Sorting on the exported file is based on the created column, ignores the sorting set by the user	Export / Album	
CS-3963	[CSWeb] Historical Report Viewer: Bug when selecting the Date range	Historical Report	26316
CS-7612	Historical Report Viewer displays old name of a renamed component.	Historical Report	28445
CS-10051	On SOAP API, an error exception occurs when trying to run ReportServices.GetHistoricalReportData endpoint	Historical Report	
CS-10089	On SOAP API, an error exception occurs when trying to run ReportServices.GetReportByID endpoint	Historical Report	
CS-9946	Error when attempting to rename component via import	Imports	31029
CS-9897	Unable to use Subscription license when installing Server	Licensing	
CS-9250	Fix indexing/query for Offline sync log. Takes about 45 seconds to load on DCIM11 server (been running for a year)	Offline Sync Manager / Logs	
CS-9422	Include username in the Offline sync log on Error	Offline Sync Manager / Logs	
CS-8904	No data loss warning when leaving the User Profile Settings while in Edit mode	Per-User Settings	
CS-9921	In the System Settings > Workflow Settings tab, the Quick Search field (from top-bar menu) shows the wrong placeholder text	Quick Search	
CS-9841	Buttons in long toolbars of some pages resize when hovered in small screen	Reports	
CS-7557	Issues with 'Overlapping Allowed' attribute when used in Reports	Reports / Custom Reports	
CS-8921	Overlapping Allowed displays wrong value in Reports	Reports / Custom Reports	
CS-10156	Error encountered in Report related to ServiceBehaviorAttribute or Couldn't store <> in Sort0 Column	Reports / Custom Reports	
CS-9694	[Historical Report] Unfriendly error when entering an invalid date in the initial date field	Reports / Historical Reports	
CS-8922	[Scripts] Saving changes on References tab will result to 'String or binary data would be truncated' error	Scripts / Details	
CS-4221	ComponentServices: Invoking GetComponentAttributeValueByAttribute throws System.ArgumentNullException: Value cannot be null.	SOAP API	30626
CS-4219	[CSWebAPI] ReportServices.GetHistoricalReportDataByNearestTimeStampAndParent does	SOAP API	

	not work		
CS-4218	[CSWebAPI] ReportServices.GetHistoricalReportDataByNearestTimeStamp does not work	SOAP API	
CS-4217	[CSWebAPI] ReportServices.GetHistoricalReportDataByComponent not working	SOAP API	
CS-4216	[CSWebAPI] ReportServices.GetHistoricalReportData not working	SOAP API	
CS-4207	[WebAPI] ReportServices.GetReportAttributes shows an error	SOAP API	
CS-4205	[WebAPI] ReportServices methods that do not return data in 912	SOAP API	
CS-8088	TryUpdateComponentAttributeValueByComponentID Null value for Space Attribute does not log History	SOAP API	29699
CS-9593	ComponentServices.RenameComponent doesn't rename subcomponents	SOAP API	30696
CS-10184	SnmpServices methods that have default component as "AllSpaces" when invoked	SOAP API	
CS-10183	CSWEBAPI SnmpServices methods that are showing error when invoked because they are missing component parameter	SOAP API	
CS-6160	[WebAPI] ReportServices: GetUserReport gets a System.NullReferenceException error	SOAP API	
CS-10197	It's possible to save invalid numeric component attribute value via the SOAP API	SOAP API	
CS-9138	[Templates] Default date value is not propagating on the existing components of that Template	Templates / Attributes	
CS-9950	Moving a template group Cables into a new template group causes a loading issue when creating connections.	Templates / Attributes	31019
CS-10235	[Templates] Setting a Template default value simultaneously with [Today] value does not propagate to existing components	Templates / Attributes	
CS-10219	[Templates] Inconsistent date-type attribute values in Template_Attribute table when adding vs updating	Templates / Attributes	
CS-10088	Error logged in console when searching for a template in Admin -> Configuration -> Templates -> Other Templates	Templates / Search	
CS-10025	Lookup for selecting templates does not select nodes on search (some broken, some working)	Templates / Search	
CS-10070	CS context links do not have a dotted underline on any iOS browsers	User Interface	

CS-9625	Unintended horizontal scrollbar in some pages	User Interface	
CS-7944	Fix CsWeb client code that relies on RegExp without escaping special characters	User Interface	
CS-8934	Some special characters show as HTML character codes on some notifications	User Interface	
CS-9814	[Users and Roles] Unnecessary horizontal scroll bar in the Permissions tab	User Interface	
CS-9914	[Zones] 'Add Zone' button is still enabled when the Details tab is in Edit mode	User Management / Zones	
CS-10177	[Zones] Deleting a zone while it's being edited then navigating away prompts a data-loss confirmation	User Management / Zones	
CS-9865	[User Settings] Default Dashboard becomes blank after deleting the configured dashboard	User Profile	
CS-10041	Workflow Settings panels resizing on cancel edit	Workflow	
CS-9031	Order can be completed even if some Tasks are not canceled nor completed yet.	Workflow	
CS-4759	Workflow: Mark Installed Button still grayed out, after device was removed from Destination Location.	Workflow	
CS-10117	[Workflow] Current Location not being updated after moving the component	Workflow	
CS-10087	Workflow filter remembers first-used value for entire session	Workflow	
CS-10195	Workflow tab Move dialog changes attribute without logging to history if a workflow exception occurs	Workflow	
CS-10068	[Workflow] Rack/Location lookup will not show the tree, unless the Data Center is saved	Workflow	
CS-10105	[Workflow] Rack/Location lookup don't show the tree if the DataCenter is changed to empty	Workflow	
CS-10166	[WF] Mark Installed button is not greyed out when you create a device in the destination Rack/Location	Workflow	
CS-10145	Unable to complete an Order with multiple tasks Canceled or Draft	Workflow	
CS-10129	Reserved port display bug when provisioning port connection in WF	Workflow	31219
CS-10125	Undoing a patch not working	Workflow	
CS-10118	Workflow: Loading of edit provision is slow using Customer DB	Workflow	31139
CS-9341	[Workflow] Setting 'Today' as default value of Date Fields attributes shows as '1/1/2001' on Task Details tab	Workflow	

CS-9152	[Workflow] Filter's date format doesn't persist after refresh, value becomes 'invalid date' after the second refresh	Workflow	
CS-9337	[Asset Workflow] Saving an invalid date in the Workflow module will cause an error in the Asset Workflow	Workflow	

12.13 List of Bugs Resolved in 12.0.1

Item Key	Summary	Cormant Component	Customer Case Number
CS-10111	Upgrade script refers to IsHydra and causes issues	Database Wizard	
CS-10112	Create a new build package that includes new CormantCS DB's and DBUpgradeSchema SQL script	Install Package	
CS-10113	Change OSS to IsHydra issue	Offline Sync Service	

12.14 List of Enhancements in 12.0.0

Item Key	Summary	Cormant Component	Customer Case Number
CS-8704	[Album] Create a new Album Attribute Group to hold specific attributes for Albums	Albums	
CS-8707	[Albums Admin] Implement the basic UI Layout for the new Album module	Albums	
CS-8708	[Albums Admin] Add ability to filter and search albums	Albums	
CS-8709	[Album] Add ability to see album attribute values	Albums	
CS-8711	[Album] Add ability to delete an album	Albums	
CS-8712	[Album] Add ability to link an album to another component	Albums	
CS-8717	[Album] Create a new dialog to handle the Add File/Link feature	Albums	
CS-8718	[Album] Add ability to find existing albums	Albums	
CS-8719	[Album] Add ability to include (attach) a new file	Albums	
CS-8721	[Album Permissions] In the Permissions tab, include a new row for the Albums module	Albums	
CS-8723	Add "Link/Unlink Album" records to Assets History	Albums	
CS-8725	[Album Permissions] Implement Album Permissions	Albums	
CS-8726	Create a new Album History Table(s) to track all changes related to Albums similar to Asset History	Albums	
CS-8861	[Config] Create Admin > System Settings > Albums page	Albums	
CS-8865	[Album] Add ability to manage Files in an Album (display the files, download, delete, add button)	Albums	
CS-8868	[Album] Add ability to unlink album from a component	Albums	
CS-9026	[Albums Admin] Add Albums Details tab to view/update album attribute values of selected Albums	Albums	
CS-9059	[Albums Admin] Add ability to unlink components from an album	Albums	
CS-9065	[Album] Add ability to link an album to another component using Drag & Drop	Albums	
CS-9116	Add content to new Admin>Album History tab - similar layout to Asset History	Albums	
CS-9119	[Album] Add ability to Delete an album when unlinking the last component from	Albums	

	that album		
CS-9120	[Album] Add ability to change the Display Name of a File/Link	Albums	
CS-9121	[Album] Add ability to delete a File/Link	Albums	
CS-9122	[Album] Add ability to display extra information about a file/link when hovering-over the icon	Albums	
CS-9143	[Config] Add ability to configure the allowed File Extensions	Albums	
CS-9190	[Albums] In the Assets > Albums tab, allow the user to upload a file by just dropping a file in the Attachments region	Albums	
CS-9201	[Album Permissions] Implement Zone Permissions	Albums	
CS-9211	Add button to open device camera and take a picture and attach to an album.	Albums	
CS-9235	[Albums Admin] Add Components tab details	Albums	
CS-9239	Search Results Grid Column for the number of linked components	Albums	
CS-9240	Add Show Orphans option on Albums Search	Albums	
CS-9241	Only Albums that the user has component View or greater rights to will be shown on the Albums Search Results grid	Albums	
CS-9278	Change the Picture / Icon that represents an Album according with Album Type Color	Albums	
CS-9287	Various UI adjustments to Admin > System Settings > Albums > File Extensions configuration	Albums	
CS-9306	Ability to take a photo and Add an album with the photo in one go.	Albums	
CS-9307	Open files in a new tab	Albums	
CS-9308	Admin Albums Search Results should be exportable to PDF/XLS/CSV	Albums	
CS-9320	Display Albums in the order of the Color Type	Albums	
CS-9321	Album templates need to use Icons and colors based on Type	Albums	
CS-9401	Limit album file selection to allowed extensions	Albums	
CS-9545	Add ability to use Quick Search on Albums Module	Albums	
CS-9612	Always-visible drag/drop area in Album attachments	Albums	
CS-9657	Add ability to remember decision when confirming album file upload via drag/drop	Albums	

CS-6688	Add a way to display the Channel Details of a connection in CS Web Connection Module	Assets / Connections	27936
CS-8829	Channel View User will be able to add Columns to the Channel View layout	Assets / Connections	
CS-8830	Channel View Users will be able to define which columns to display in the channel View via an options dialog	Assets / Connections	
CS-9280	[Channel Details View] Display the view as a Basic Table (all data displayed in different cells and rows)	Assets / Connections	
CS-9281	[Channel Details View] Add ability to display imagens and icons on the table-grid	Assets / Connections	
CS-9348	On Connections tab, change how connection tab buttons behave for the new Channel Details View	Assets / Connections	
CS-9411	Add attributes units to Channel View attribute values	Assets / Connections	
CS-9487	Channel Details View - XLS export	Assets / Connections	
CS-9488	Channel Details View - PDF export	Assets / Connections	
CS-9490	Channel Details View - Add a CS hyperlink to the items in the Port / Cable column	Assets / Connections	
CS-9494	Channel Details View - All Components in details grids should be Hyper linkable	Assets / Connections	
CS-9702	Add hyperlinks to exported XLS on Channel Details View	Assets / Connections	
CS-8957	Add CS ID to hover over Cursor text on asset Details screens	Assets / Details	
CS-9600	Remove the dots / data points from the historical reports in assets module and reports module.	Assets / Historical Report	
CS-9403	Investigate speed of Plan View, Fix if possible Create cases if longer time is required	Assets / Plan View	
CS-9455	Keep Plan View tab in memory when navigating back and forth the tab	Assets / Plan View	
CS-9456	Re-use same Plan View data when opening the tab on another panel	Assets / Plan View	
CS-9457	Improve responsiveness of Plan View by offloading part of the processing to separate threads	Assets / Plan View	
CS-9458	Show loading spinner when entering or leaving Edit Mode in Plan View	Assets / Plan View	
CS-9459	Do not show rack equipment of nested plans in Plan View	Assets / Plan View	
CS-9799	Rack View options dialog for Device Attributes should be Add/Remove Attribute(s)	Assets / Rack View	
CS-9326	Attributes and Templates UX when changing contexts / tabs	Configuration	

CS-9728	Move Custom WF Attributes to Component Context	Configuration / Attributes	
CS-9729	Enforce the Rules for Component Context attributes	Configuration / Attributes	
CS-9730	Enforce the Rules for Workflow Context attributes	Configuration / Attributes	
CS-9731	Enforce the Rules for Album Context attributes	Configuration / Attributes	
CS-8845	[Templates] In the Templates Config, change the UI to display system-defined Templates separately of component templates	Configuration / Templates	
CS-9167	Disable some template tabs based on the template context	Configuration / Templates	
CS-9322	Workflow Templates that have one or more Tasks should not be deleted	Configuration / Templates	
CS-9323	Disable Export/Import for Album & WF templates.	Configuration / Templates	
CS-9539	Add ability to use Quick Search on Constraints Configuration page	Constraints	
CS-9961	In the DB Wizard > Configure Database section, include a new option to set up FileStream	Database Wizard	
CS-9389	[Dashboard] Change the minimum sample size from 2 to 25	Dashboard	
CS-8791	Importing [BLANK] value on Date data types fails	Imports (Templates / Attributes)	30165
CS-9543	Add ability to use Quick Search on Network Discovery Locations page	Network Discovery / ND Locations	
CS-3073	Add the attribute 'Type' as part of the attributes selection when doing reports	Reports / Custom Reports	25807, 26049, 27944
CS-5846	Allow Template Type as filter in report	Reports / Custom Reports	
CS-9647	On Custom Reports, the Includes Filter Comparison considers only % as the wildcard. It should consider * too.	Reports / Custom Reports	
CS-9599	Historical Reports - Default data set to next hour	Reports / Historical Reports	
CS-8850	Searching Attributes (using the complete name) with Brackets does not display in Attributes list in some Modules	Search	30226
CS-1033	Improve Quick Search functionality	Search & Filtering	
CS-9030	When selecting a Album Template, the user should be able to use Search input field	Search & Filtering	
CS-9526	In the Template lookup picker, change how the Search results are shown	Search & Filtering	
CS-9532	Add ability to use Quick Search on Reports Module	Search & Filtering	

CS-9533	On Workflow Module, rename the Quick Search placeholder text	Search & Filtering	
CS-9534	On Audit Module, rename the Quick Search placeholder text	Search & Filtering	
CS-9535	On Template Configuration, improve the Quick Search mechanism (use filtered tree, and rename the Quick Search placeholder text)	Search & Filtering	
CS-9536	On Attributes Configuration, rename the Quick Search placeholder text	Search & Filtering	
CS-9537	Add ability to use Quick Search on Zones Module	Search & Filtering	
CS-9538	Add ability to use Quick Search on User Management Module	Search & Filtering	
CS-9539	Add ability to use Quick Search on Constraints Configuration page	Search & Filtering	
CS-9540	Add ability to use Quick Search on Saved Attributes Configuration page	Search & Filtering	
CS-9541	Add ability to use Quick Search on User Management > Security page	Search & Filtering	
CS-9542	Add ability to use Quick Search on Scripts Configuration page	Search & Filtering	
CS-9543	Add ability to use Quick Search on Network Discovery Locations page	Search & Filtering	
CS-9635	In the Attributes dialog picker, there're no notification message when there are no results found	Search & Filtering	
CS-9636	In the Quick Search field (from top-bar menu), improve the placeholder text so that becomes clear that wildcard are supported	Search & Filtering	
CS-9644	On Component Lookup, adjust the placeholder text so that becomes clear that wildcard are supported	Search & Filtering	
CS-9645	On Template Lookup, the Search should work similar to Attributes Picker	Search & Filtering	
CS-9646	On Zone Lookup, adjust the placeholder text so that becomes clear that wildcard are supported	Search & Filtering	
CS-9665	In the Search input fields, when hitting on X button, it should clear the field and perform the search bringing all data	Search & Filtering	
CS-9666	In the System Settings > Workflow Settings tab > New Task Dialog, change the Attribute Group lookup to follow convention	Search & Filtering	
CS-9667	In the Component lookup picker, change how the Search results are shown (use filtered tree)	Search & Filtering	
CS-9697	On Template Lookup Tree, add a context-menu with options to Expand All and Collapse All	Search & Filtering	
CS-9699	Adjust Single-select Attribute pickers to be consistent through the application	Search & Filtering	

CS-9700	Adjust the Title of the Attribute dialogs to be consistent through the application	Search & Filtering	
CS-9701	Adjust Multi-select Attribute pickers to be consistent through the application	Search & Filtering	
CS-9734	The WF Templates Attribute Picker should be altered to only show Component Context attributes	Search & Filtering	
CS-9735	The WF Settings Attribute Picker should be altered to only show Component Context attributes	Search & Filtering	
CS-9752	Add filtered search to Zone lookup	Search & Filtering	
CS-9753	Add filtered search to Single Value Lookup dialogs (used in multiple places picking a component)	Search & Filtering	
CS-9754	Add filtered search to component lookups in Workflow	Search & Filtering	
CS-9755	Add filtered search to Port and Cable lookups	Search & Filtering	
CS-9274	Update SOAP API docs for template refactoring work.	SOAP API	
CS-9733	Check the following SOAP Endpoints and ensure they only work with Component Context Attributes	SOAP API	

12.15 List of Bugs Resolved in 12.0.0

Item Key	Summary	Cormant Component	Customer Case Number
CS-8987	Restriction when deleting a space in HH [Android] where there is a planned Task	Android / Sync	
CS-4142	Editing the space of a component on Assets details tab doesn't update the breadcrumbs	Assets / Details	
CS-9163	Workflow templates appear in component template lookup dialogs	Assets / Details	
CS-9290	Double vertical scroll bar on the Template and Space lookup window	Assets / Details	
CS-9302	Validation missing and error encountered when Template is not set when adding a component or multiple components	Assets / Details	
CS-9431	There's a JS error when trying to Add new Component	Assets / Details	
CS-9477	In Asset > Details, JS error when trying to change the Space field of DC1-CRAC01 to DC1-ROW1	Assets / Details	
CS-9481	[Assets] Console error when adding a single component	Assets / Details	
CS-9748	Buttons in Assign Barcode dialog have weird offset on small screen	Assets / Details	
CS-9826	After renaming a component, any succeeding save in attributes of the same component will keep displaying the	Assets / Details	

	rename dialog		
CS-9830	Renaming a component on Assets details tab doesn't update the breadcrumbs	Assets / Details	
CS-9833	Incorrect and unnecessary validation on the Space field when adding multiple components	Assets / Details	
CS-9848	On Assets, the user can't add/delete a component due to a wrong "permission" rule when using the corresponding keyboard shortcut	Assets / Details	
CS-9146	In Assets Historical Reports, make the chart fit in the page	Assets / Historical Report	
CS-5708	[Move Here] JS error with "No component found" shows in the console when a new barcode is entered on the Search field	Assets / Move Here	
CS-8324	Some components cause the confirmation dialog to be shown when Plan View is in edit mode, whereas other components in the same level of the hierarchy don't	Assets / Plan View	
CS-8995	[Assets] Console error when moving components while Planview tab is the active tab	Assets / Plan View	
CS-9043	[Planview] Console error when clicking Edit and Save on plan view while the left panel is on Search tab.	Assets / Plan View	
CS-9335	[Plan View] Console error when copying some component's vertices using "Make Same As"	Assets / Plan View	
CS-9387	[Assets] Console error when pressing the 'Escape' button from keyboard while Plan view is the active tab	Assets / Plan View	
CS-9437	Rack front cannot be unset if the template has a front defined	Assets / Plan View	
CS-9460	Zoom is incorrect when resetting/loading a large plan on Plan View tab	Assets / Plan View	
CS-9470	Rack does not move back to original position when cancelling edit if Save Template functionality is used	Assets / Plan View	
CS-9471	Template vertices are not updated and rack is moved to weird position when using Save Template functionality on an unchanged rack	Assets / Plan View	
CS-9473	Unpositioned components do not use default front vertices defined on Template	Assets / Plan View	
CS-9496	Shortcut key for editing plan view not working	Assets / Plan View	
CS-9548	Plan View throws error in console when renaming the same component twice	Assets / Plan View	
CS-9615	Plan View loads data twice in the back-end when saving the plan	Assets / Plan View	

CS-9822	Plan View rack equipment images are inverted	Assets / Plan View	
CS-9836	[Planview] 'Index out of range' error when re-uploading a Planview image	Assets / Plan View	
CS-9847	[Planview] Saving a floor plan after clicking OK on the data loss warning generates a console error	Assets / Plan View	
CS-9903	Unable to save changes for icons in Plan View and they are inverted when dragged	Assets / Plan-view	
CS-8014	[Rack View] Clicking Edit mode when it is disabled will show 'It's not possible to edit 2 panels at the same time.' even though the split screen is not enabled	Assets / Rack View	
CS-8069	In the Rack View, a confirmation dialog appears warning about data-loss even when selecting an equipment from the current rack	Assets / Rack View	
CS-8697	[Permission] Console error encountered when user without permission "Add Component" in Rack View	Assets / Rack View	
CS-9550	Copying a row unracks devices and causes them to lose their U location.	Assets / Rack View	30605
CS-9654	On Assets -> Rack View -> Display Options dialog, adding a new attribute should include it at the end of the list, not in alpha order	Assets / Rack View	
CS-9655	On Assets -> Rack View -> Display Options dialog, adding/removing an attribute after a reorder doesn't update the list	Assets / Rack View	
CS-9656	On Assets -> Rack View -> Display Options dialog, cancelling the delete attribute dialog after a reorder doesn't persist the order changes	Assets / Rack View	
CS-9844	All attributes shown on Delete attributes dialog for Print options of Rack View when there are no attributes to be used as page headers	Assets / Rack View	
CS-8637	Action buttons are in the wrong state after switching to a different Saved filter while in Edit mode	Assets / Search	
CS-9139	[Search] Searching with invalid date on the date fields will get stuck on a loading state and an unfriendly error when saving it.	Assets / Search	
CS-9170	[Search] Searching while user is in Edit mode will make a JS error occur	Assets / Search	
CS-8982	Issues after renaming components via the Search Results tab	Assets / Search Results	
CS-9696	Assets Tree component names are not updated when components are renamed in Search Results tab	Assets / Search Results	
CS-9277	Asset-Subcomponents Deleting mass components is very slow or fails	Assets / Subcomponents	

CS-9838	Error 'No Such Host is Known' when running Query Device of an asset in Asset tree.	Assets / Tree	28127
CS-9872	[Assets Tree] Using the 'F2' shortcut, users can put the node in edit mode even when the edit is not allowed	Assets / Tree	
CS-8524	Console error when clicking on Move button in Assets Workflow for users with View-only permission to Workflow	Assets / Workflow	
CS-8651	[Asset-WF] Inconsistent display of data-loss warning when editing the Task Flags	Assets / Workflow	
CS-9864	[Assets] Clicking a component after accessing an unpermitted tab generates a console error	Assets / Workflow	
CS-9821	Barcode scanner uses wrong device camera	Barcode Scanning	
CS-9397	In the Configuration > Attributes, in the lookup of the "Attribute to Calculate" field, a JS error occurs when attribute group is selected	Configuration / Attributes	
CS-9662	[Attribute Configuration] Console error when clicking the 'OK' button without clicking any attribute group	Configuration / Attributes	
CS-9671	[Attribute Config] Current attribute Group node not being selected when opening Attribute Group dialog	Configuration / Attributes	
CS-9850	Rack Unit Height rack attribute cannot be calculated when used as Calculated Attribute	Configuration / Attributes	30939
CS-9943	[Attributes] Unable to set Selection-type attributes to Required	Configuration / Attributes	
CS-9247	Incorrect number of components specified when changing template attribute value	Configuration / Templates	
CS-9248	Admin -> Configuration -> Templates -> Remove Attributes dialog not working for some attributes	Configuration / Templates	
CS-9344	[Template] When moving a template to another parent, the Template field (parent) is not updated on the page	Configuration / Templates	
CS-9406	In the new Attribute Lookup Dialog, when displaying Context Type dropdown there are two scrollbars	Configuration / Templates	
CS-9438	[Templates] Console error encountered when Add Template or CTRL+I is clicked by user with View Only permission	Configuration / Templates	
CS-9556	On Template Details, the "Connected Icon" attribute is not being displayed in the correct order	Configuration / Templates	
CS-9672	No config history log when renaming a Template via context menu	Configuration / Templates	
CS-9790	[Template] When exporting a template subcomponent, the subcomponent name column is blank	Configuration / Templates	
CS-8695	[Dashboard] Issues when the report used by a widget is deleted in Reports	Dashboard	

	tab		
CS-9118	[Dashboard] Inconsistent behavior when the Date Range Fields on widgets are empty or with invalid data	Dashboard	
CS-9213	Meter widget in dashboard is not displayed properly	Dashboard	
CS-9691	[Dashboard Widget] When creating a new Custom Report Widget, the title is not persisted in the database properly	Dashboard	
CS-8531	[Historical Report] Clicking the Export and Print button when there is no selected report generates console error	Historical Report	
CS-9572	[Import] Deleting mass components is very slow or fails	Imports	
CS-9812	[Import] Line References in the Import Errors are 1 line off when the file is in .xls/.xlsx format	Imports	
CS-9942	[Import] Unable to import connections using Excel format	Imports	
CS-9947	[Logs] Setting 'Today' as value for Date attributes under Templates tab shows as '1/1/1' on the Configuration History	Logs	
CS-9220	In the Logs > Administration History, some Permission Level descriptions don't match the displayed text from the Admin > Users & Roles > Permissions tab	Logs / Administration History	
CS-5316	Script Logs need to be limited to a handle-able number of entries to display	Logs / Configuration History	
CS-9293	Changes to Config/Saved Attributes are not saved to Config History	Logs / Configuration History	
CS-9553	On Configuration History, a JS error occurs when trying to Export to PDF, XLS or CSV	Logs / Configuration History	
CS-9732	[Logs] Setting 'Today' as default value for Date-type attributes shows as '1/1/1' on the Configuration History	Logs / Configuration History	
CS-4933	Console error when choosing Asset as an attribute in Discovery Attribute Mapping	Network Discovery	
CS-9309	JS error encountered when opening attribute lookup in Reference Data	Reference Data	
CS-9439	Ability to search a report in the report module	Reports	30511
CS-9721	Exporting files in XLS format is not working with History related reports	Reports / Historical Reports	
CS-7546	[SwaggerUI] Error shown in the POST request on Attributes endpoint	RESTAPI	
CS-9445	On Rest API, an Object Reference error is shown when creating an OfflineSync Conflict with an OfflineSync Profile that does not exist	RESTAPI	

CS-9740	'All Spaces' shows as '0' on the Add Component dialog when using the Create/Assign Barcode dialog	Scan & Assign	
CS-9748	Buttons in Assign Barcode dialog have weird offset on small screen	Scan & Assign	
CS-9668	When Modified scripts are run multiple times on the same rack when deleting its children	Scripting Service	
CS-9747	Quick search does not work after repeating a search after a clear	Search & Filtering	
CS-9797	Search loop behavior in Templates Search	Search & Filtering	
CS-9871	Components of type Area are not shown on lookups that should include that type of component	Search & Filtering	
CS-7604	User is redirected to a blank page after setting up a new password	Security / Login	
CS-7710	Blank page displayed after logging in for first time	Security / Login	
CS-8936	[Workflow Settings] Clicking 'Cancel' on the data loss warning will allow no email status selected, causes console error when saving on other tabs	Settings / Workflow	
CS-9048	[Workflow Settings] Console error when clicking the 'OK' button without clicking any attribute group	Settings / Workflow	
CS-9736	[UI] Put a good amount of space between checkbox and label in Enable Status Change Emails	System Settings / General	
CS-9800	[User Management] Admin dropdown options in Permissions tabs and in Zones tab are different	User Management / User and Roles	
CS-9839	In the Create User dialog, a JS error if the user selects the Blank option in the Role field	User Management / User and Roles	
CS-4802	[User] At first login of user, doesn't fully load the homepage	User Management / Users and Roles	
CS-5785	[Permission] User with View only permission can invoke the Add Component dialog via ctrl+I	User Management / Users and Roles	
CS-9594	Error when trying to update module permissions for the Customer role	User Management / Users and Roles	
CS-9737	After hitting Apply Filter, the action buttons remain enabled even if there's no selected user	User Management / Users and Roles	
CS-9803	[User and Roles] Console error when selecting the blank option for the Role when creating a new user	User Management / Users and Roles	
CS-6533	[Workflow Attachment] No validation message when trying to add a Attachment without an attached file	Workflow	
CS-7754	Error after selecting a component without a site on On WF > Add New Task	Workflow	

CS-6287	[Workflow] Device Details tab stuck in loading state when a user with View permission tries to open the task	Workflow / Device Details	
CS-8539	[Workflow] Device Details is stuck in loading state when the destination location set is deleted from the Asset tree	Workflow / Device Details	
CS-8976	Console error encountered when clicking the down arrow key after the end of the port sequence in Provisioning details	Workflow / Provisioning	
CS-9682	Unable to create an Admin Task	Workflow Manager	
CS-9683	Error encountered when creating a task to a component with duplicate slot number	Workflow Manager	