



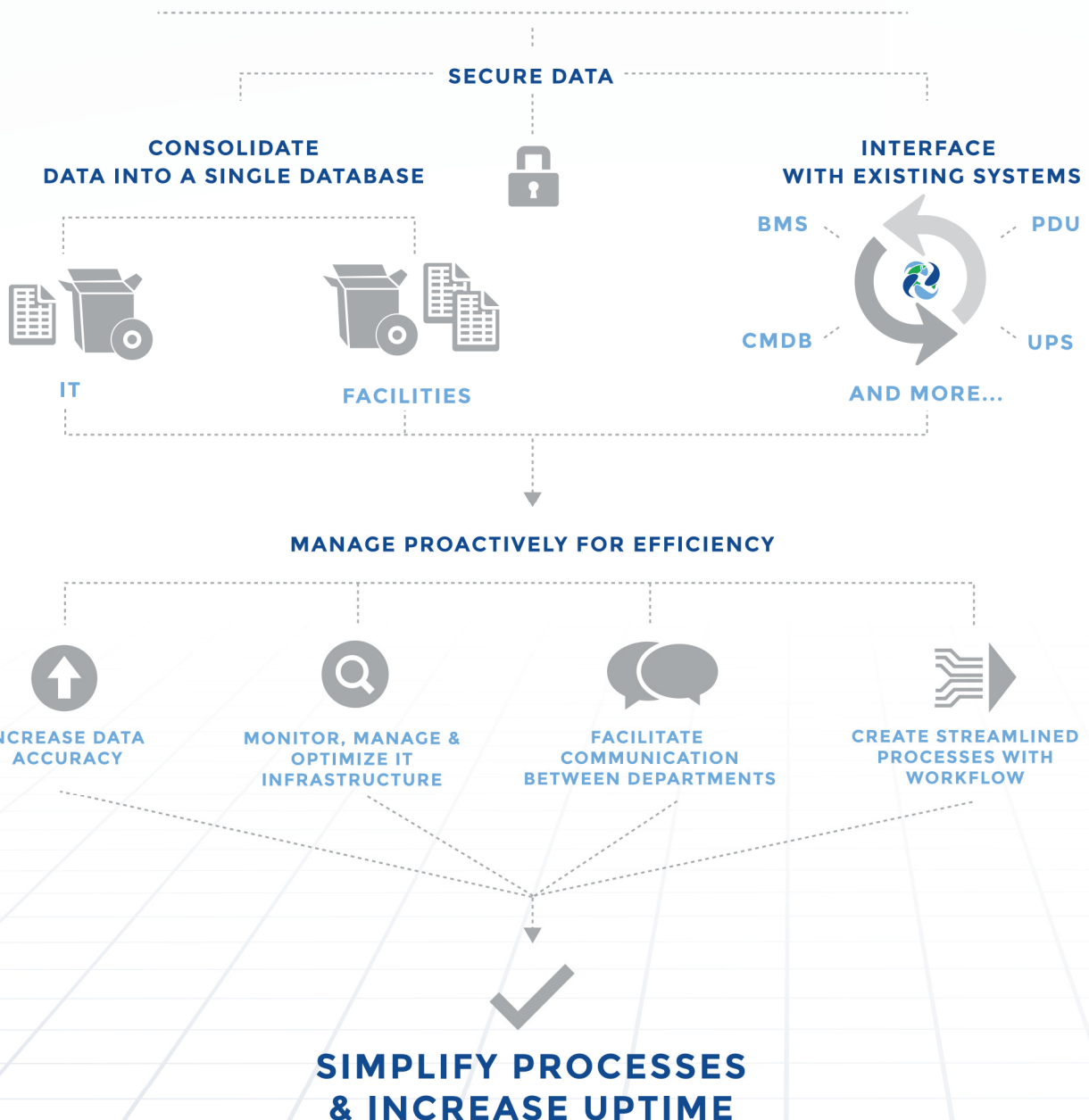
DCIM And Beyond



# DATA CENTER INFRASTRUCTURE MANAGEMENT (DCIM)

**DCIM encompasses the required infrastructure, equipment, connectivity and environmental information inside and around the data center.** While data centers and campuses continue to grow in size and amount of data and equipment, it's necessary to gain access to all hidden and available information. DCIM provides a consolidated view of the data; including historical, current and future infrastructure states and supports processes to ensure data is updated, maintained and analyzed. DCIM enables Facilities and IT groups to plan together in order to achieve success together.

## CORMANT-CS DCIM FOR DATA CENTERS, COLOCATIONS AND CAMPUSES



## THE CORMANT-CS DIFFERENCE

### OPEN FRAMEWORK

Provides customers the autonomy to configure and advance functionality based on the organization's requirements without needing Cormant assistance.

- Full configurability of attributes, templates, analytics and more.
- Open API
- Scripting language enables complete extensibility, any SNMP equipment query and custom calculation measurements.

### EXPERIENCED

Cormant-CS, launched in 2003, was the first infrastructure management software solution for data centers (DCIM) and campuses (DCIM And Beyond).

### TRUSTED EXPERTS

Every member of the Cormant team is a DCIM product expert. The software has been successfully implemented in nearly every type of industry and boasts a 94% customer retention rate.

### GLOBAL SUPPORT

Cormant's world class 24/7 support team provides prompt and thorough assistance with follow up to ensure satisfaction for customers in any part of the world.

### MOBILITY

Ensures real-time, accurate data by recording changes at the site of the change with a mobile device. The ability to use any tablet with online or offline functionality for limited Wi-Fi locations. Barcode and RFID support is included. The first solution to include full mobility (since 2003).

### CONNECTIVITY

Quickly and easily documents any end-to-end power or data connection. Stems from the expertise of Cormant's original CableSolve software solution.

### SIMPLE UI

The most intuitive user interface in the industry, including seamless functionality across all platforms, plain English labels, customer-specific naming and more.



# CORMANT-CS FUNCTIONALITY

## ANALYTICS

- Up-to-date, configurable dashboards, analytics and alerts.
- Shareable reports with past, present and future data.

## CAPACITY MANAGEMENT

- Monitor and optimize space, cooling and power at the equipment, rack or data center levels.
- Reduce the need for purchasing additional square footage by optimizing rack capacity and planning with future views.
- Plan new buildouts.



## MOBILITY

- Record changes at the site of the change for accurate data.
- Use any tablet; barcode and RFID supported.
- Online and offline functionality for limited Wi-Fi locations.

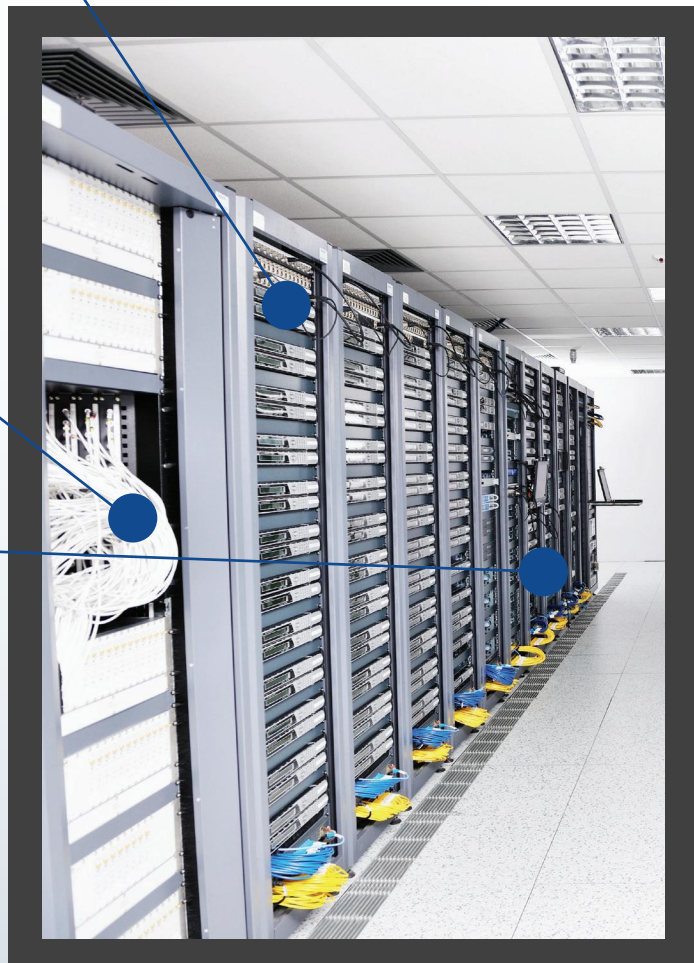


## CONNECTIVITY

- Document end-to-end power and data connections.

## POWER MANAGEMENT

- Monitor and optimize power utilization to increase uptime and save money.
- Identify optimal locations for new equipment.
- Discover inefficient equipment and proactively manage the largest power consumers.
- Interface with BMS, UPS, PDU and more.





## INFRASTRUCTURE VIEWS

- View IT infrastructure from dynamic rack, floorplan, data center, building or map views from past, present or future data.

## PLAN & CHANGE MANAGEMENT

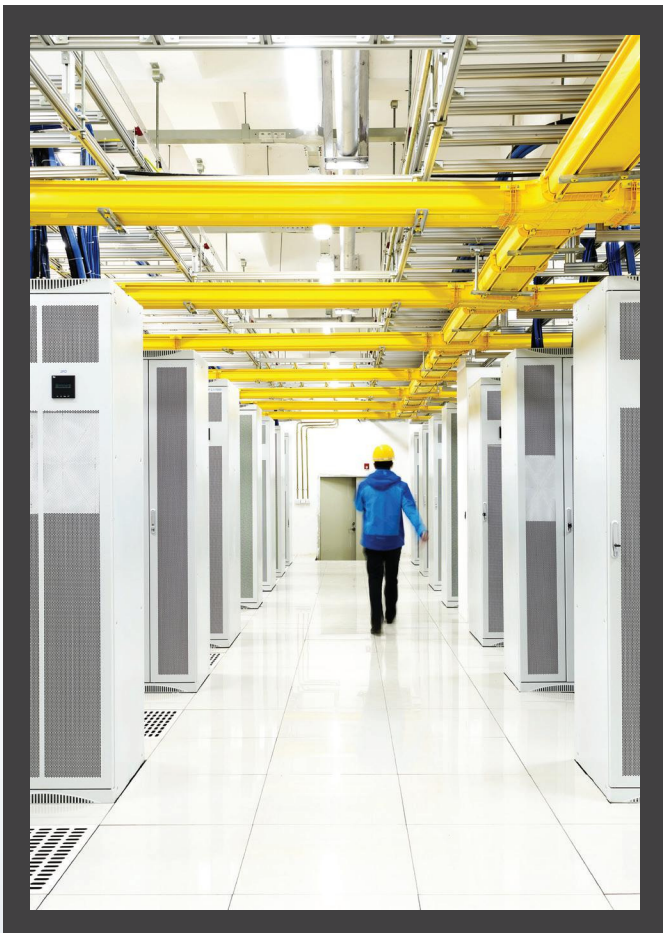
- Plan and manage all changes in Cormant-CS using Workflow by aligning resources, teams and processes.
- View all changes, projects and tasks in a single, up-to-date database.
- Plan and analyze the impact of changes with future views and analysis.
- Enhance security of data, equipment and connections.
- Maintain records of historical data for compliance reporting.
- Configure alerts for monitored data.

## IT EQUIPMENT MANAGEMENT

- Consolidate and standardize information, including assets, locations, purchases, historical data, ownership data, support, connectivity and configurations into a single database.
- Monitor the lifecycle of all assets.
- Acquire and access information with mobile device, server, desktop, web and API functionality.
- Integrate with your CMDB.
- Segregate access to information by equipment, rack or building for high-security requirements.

## ENVIRONMENTAL MANAGEMENT

- Monitor and optimize heating, cooling & humidity.
- Eliminate unnecessary cooling.
- Identify optimal locations for new equipment.
- Interface with CFD systems.



## IMPLEMENTATION



### ACQUIRING AND BUILDING THE DATABASE:

Acquire accurate data from importing spreadsheets, SNMP discovery, web services XML API or adding, connecting and auditing from a mobile handheld device.

---



### EQUIPMENT-BASED LICENSING MODEL:

Only pay for the equipment owned for ease of adoption and scalability. Licenses are owned perpetually with all features included in every license and no modules or user seats to purchase.

---



### IMPLEMENTATION:

“Tried-and-trusted” step-by-step implementation approach that has helped hundreds of companies from all industries.

---



### INTERFACES:

The web services XML API allows full read and write capability to the database, interfacing with an organization's existing systems.

---



### TRAINING:

Technical courses are available from basic user training to advanced scripting with customized course options.

## CORMANT-CS COMPONENTS

SERVER MODULE USING MICROSOFT SQL

---

DESKTOP AND WEB CLIENT

---

HISTORICAL DASHBOARD WIDGETS

---

MS WINDOWS MOBILE HANDHELD COMPUTER APPLICATION

---

READ/WRITE WEB SERVICES SOAP API

---

EXPORT/IMPORT OF DATA FROM XLS/CSV FORMATS

---

SCHEDULING MODULE FOR HISTORICAL, REPORTS, SCRIPTS

---

FULL IMPLEMENTATION, TRAINING AND ONGOING SUPPORT SERVICES

## CERTIFIED SOLUTION PARTNERS

### ASIA PACIFIC

LantroVision (S) Ltd  
Phone: +65 6275 0160  
Email: marcom@lantro.com  
Web: www.lantro.com

### ITALY

Connect  
Phone: +39 347 2565440  
Email: rino.lettieri@dcim.it  
Web: www.dcim.it

### POLAND

Netserve  
Phone: +48 (22) 244 27 91  
Email: biuro@netserve.pl  
Web: www.netserve.pl

### AUSTRALIA/NEW ZEALAND

Avantex Australasia Pty Ltd  
Phone: +61 2 9907 8910  
Email: sales@avantex.com.au  
Web: www.avantex.com.au

### NETHERLANDS/BELGIUM

4 Critical IT  
Phone: +31 (0) 78 6291060  
Email: sales@4criticalit.nl  
Web: www.4criticalit.nl

### UK/EUROPE

HellermannTyton Data Ltd  
Phone: +44 (0) 1604 707416  
Email: sales@htdata.co.uk  
Web: www.htdata.co.uk

### IRELAND

Temple Sales & Distribution  
Phone: +353 (1) 427 1400  
Email: darren@templesales.com  
Web: www.templesales.com



Cormant has been an expert in IT infrastructure management software for the data center (DCIM) and beyond since 2001. Boasting a 94% customer retention rate, Cormant's solutions are sold globally with customers and partners on six continents encompassing all industries. Cormant works with customers to improve their management, control and reporting processes by delivering Cormant-CS, a DCIM solution that provides a single-pane-of-glass view to where the physical and logical layers of IT infrastructure meet.

Learn more at [WWW.CORMANT.COM](http://WWW.CORMANT.COM)

## CORMANT OFFICES

### North America/Global (Headquarters)

669 Pacific St., Suite D  
San Luis Obispo, CA 93401  
Phone: +1 805 747 4178  
Toll Free: +1 855 CORMANT  
Email: [sales@cormant.biz](mailto:sales@cormant.biz)  
Web: [www.cormant.com](http://www.cormant.com)

---

### UK/Europe

Phone: +44 (0)20 33 972 911  
Email: [sales@cormant.co.uk](mailto:sales@cormant.co.uk)  
Web: [www.cormant.co.uk](http://www.cormant.co.uk)

---

### Asia Pacific/Middle East

Phone: +65 3158 2022  
Email: [sales-asia@cormant.biz](mailto:sales-asia@cormant.biz)

---

### Partners on 6 continents

Connect with us on LinkedIn, Twitter and Blogger.



---

### LEGAL:

Cormant and the Cormant logo and Cormant-CS and the Cormant-CS logo are trademarks of Cormant, Inc. and these marks are registered in some jurisdictions. Cormant-CS is patented in the US and the UK.

Software specifications may be subject to change without notice; some features may be optional or require additional third party software or available at a later date. Cormant software is offered subject to Cormant's standard license agreement available in the software package or on request.

All other trademarks, service marks and company names used are owned by their respective owners and may be registered.